

# U 96

---

# U-BOAT

## Pack 9

### Assembly Instructions

**Kit 33: Forward central bulkhead**

**Kit 34: Central compartment deckhead**

**Kit 35: Central compartment deckhead: additional details**

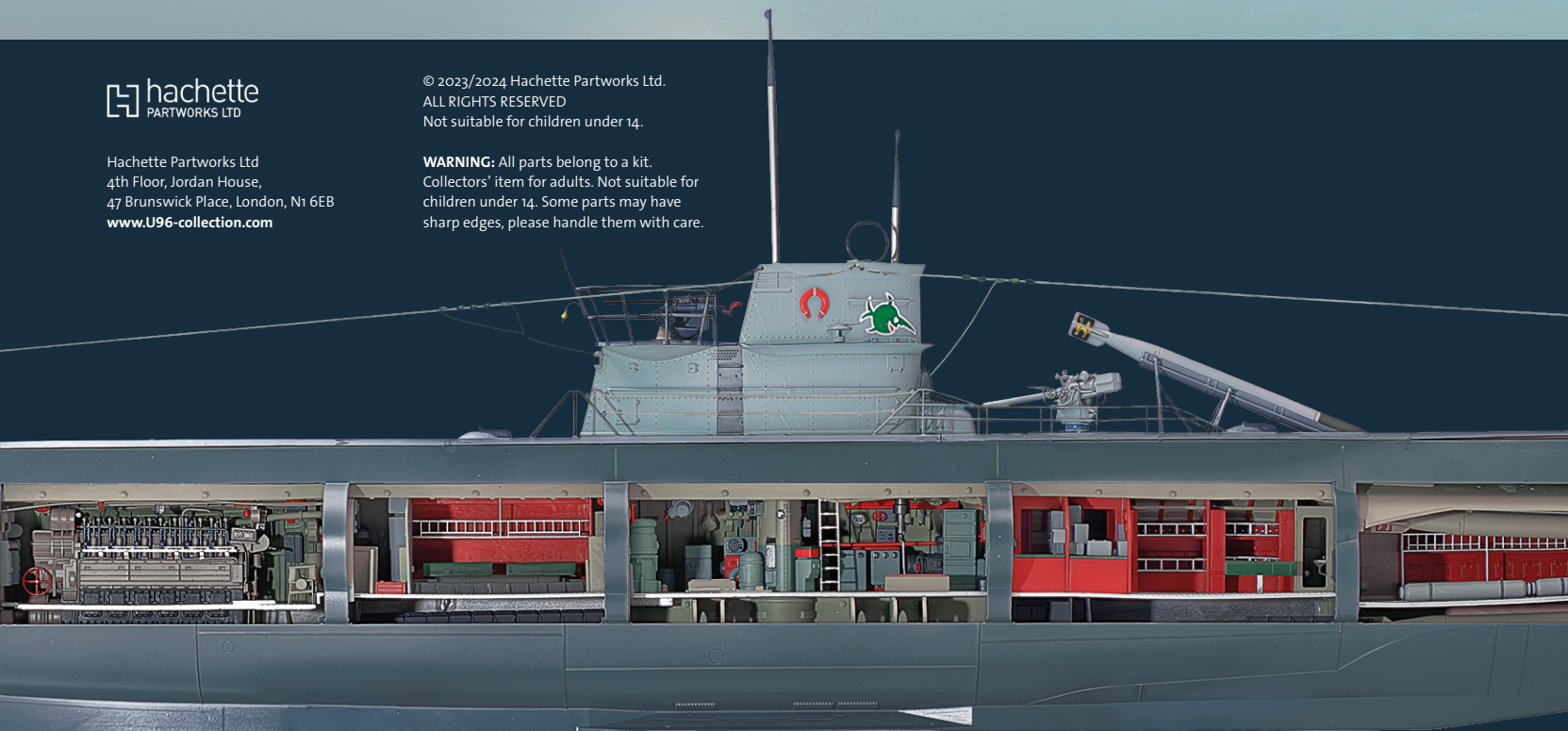
**Kit 36: Central periscope**



Hachette Partworks Ltd  
4th Floor, Jordan House,  
47 Brunswick Place, London, N1 6EB  
[www.U96-collection.com](http://www.U96-collection.com)

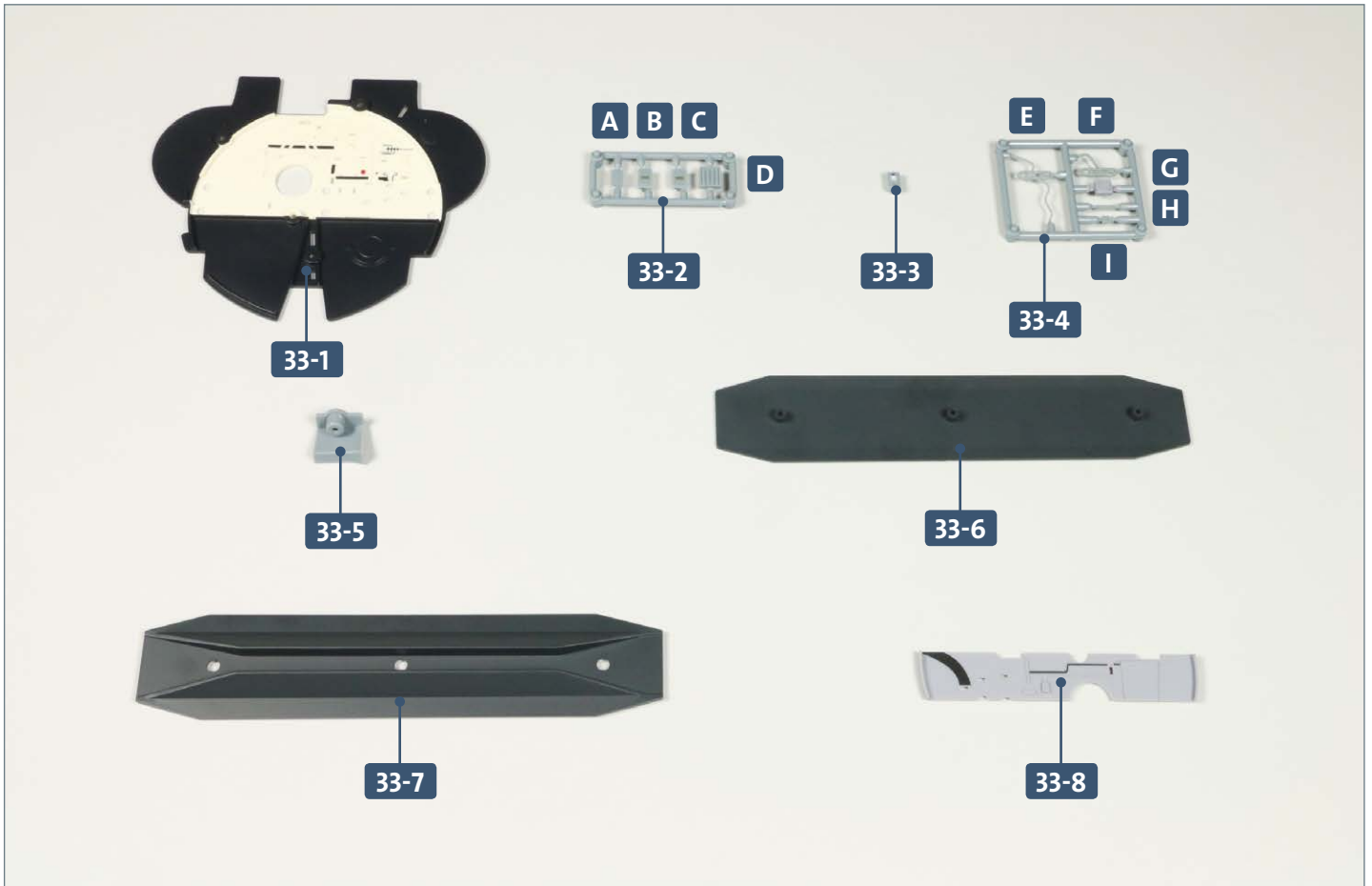
© 2023/2024 Hachette Partworks Ltd.  
ALL RIGHTS RESERVED  
Not suitable for children under 14.

**WARNING:** All parts belong to a kit.  
Collectors' item for adults. Not suitable for  
children under 14. Some parts may have  
sharp edges, please handle them with care.



# Kit 33: Forward central bulkhead

In this kit, a connector is attached to the second hull section and a mounting plate is attached to the keel. The central forward bulkhead is then fitted with various parts.



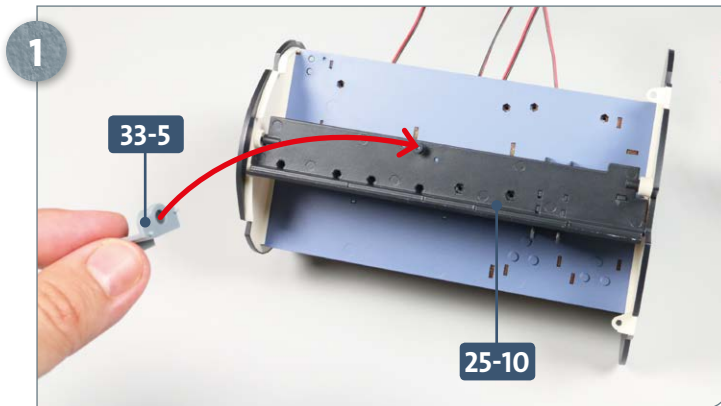
Parts reference list	
Part no.	Name
33-1	Forward central bulkhead
33-2	Frame (A, B, C, D)
33-3	Speed log
33-4	Frame (E, F, G, H, I)
33-5	Connector
33-6	Attachment baseplate
33-7	Keel attachment
33-8	Mounting plate



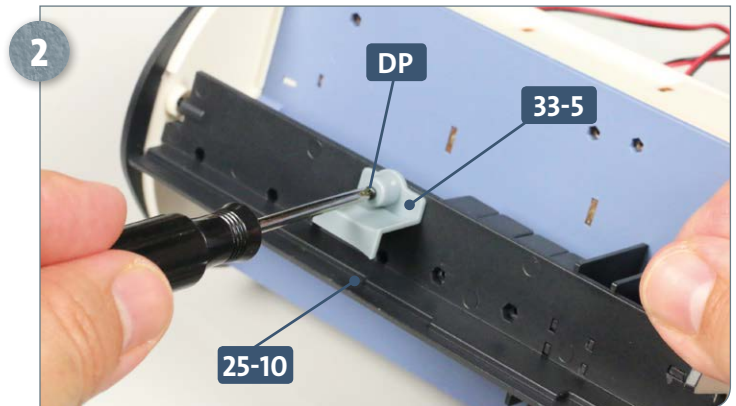
Screws		
Ref	No.	Dimensions
AP	3+1	2 x 4 mm
DP	1+1	2 x 6 mm

## Kit 33: Forward central bulkhead

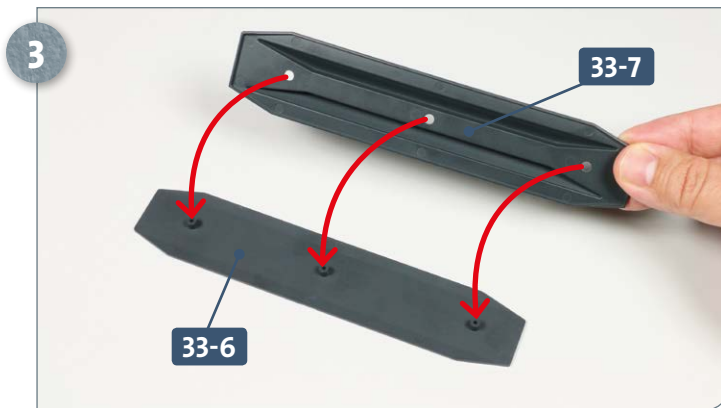
### STAGE 1 → The second compartment and keel



Place the second hull section (comprising the forward crew quarters, radio and listening room) on your work surface so that you have access to the back. Fit the connector **33-5** onto the mount on the installation rail **25-10** as indicated by the arrow.



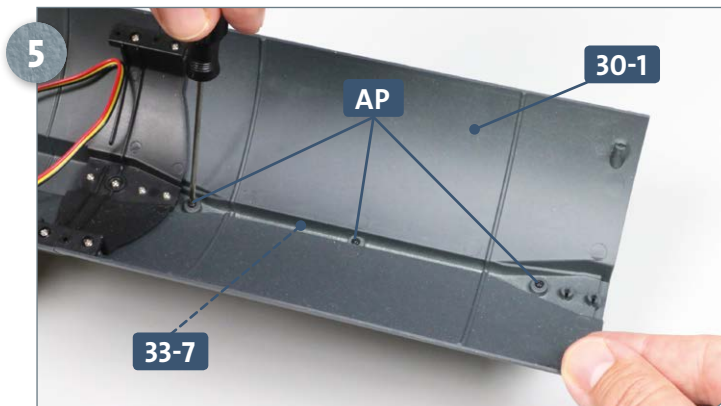
Fix the connector **33-5** in place using a **DP** screw.



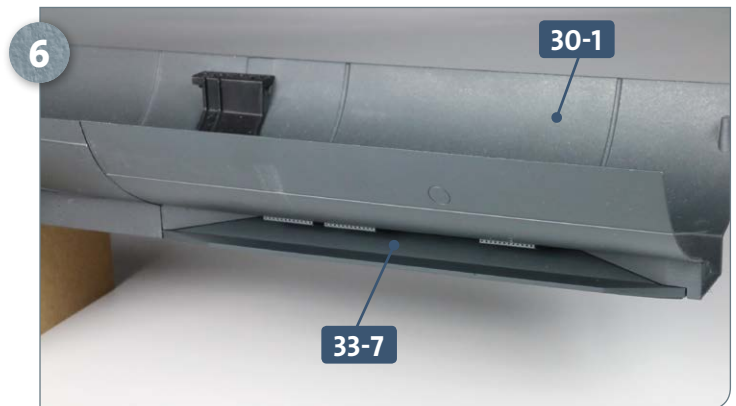
Place the attachment baseplate **33-6** on your work surface. Take the keel attachment **33-7** and fit it onto the baseplate as shown by the arrows.



Take the main hull section and place the keel attachment assembly **33-6/33-7** in front of it, as shown. Have three **AP** screws ready.



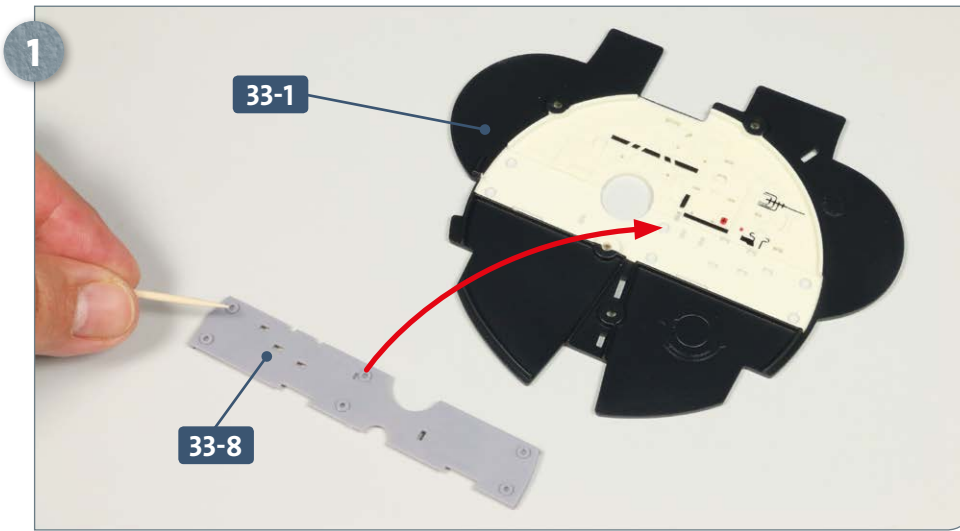
Position the keel attachment **33-7** underneath the lower hull section **30-1** and fix in place from above using three **AP** screws. See also the next step.



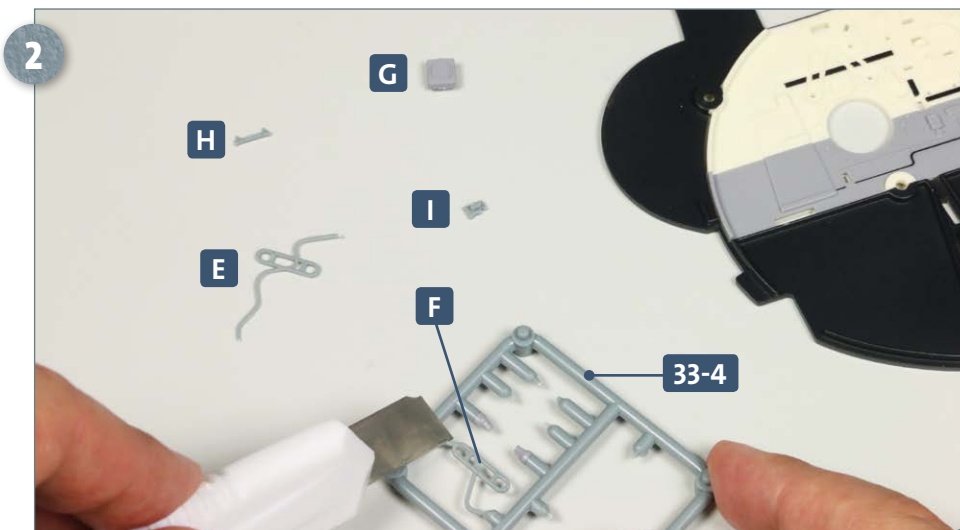
This photo shows the keel attachment **33-7** fitted to the lower hull plate **30-1**. The hull assembly won't be needed again for a while, so put it safely to one side.



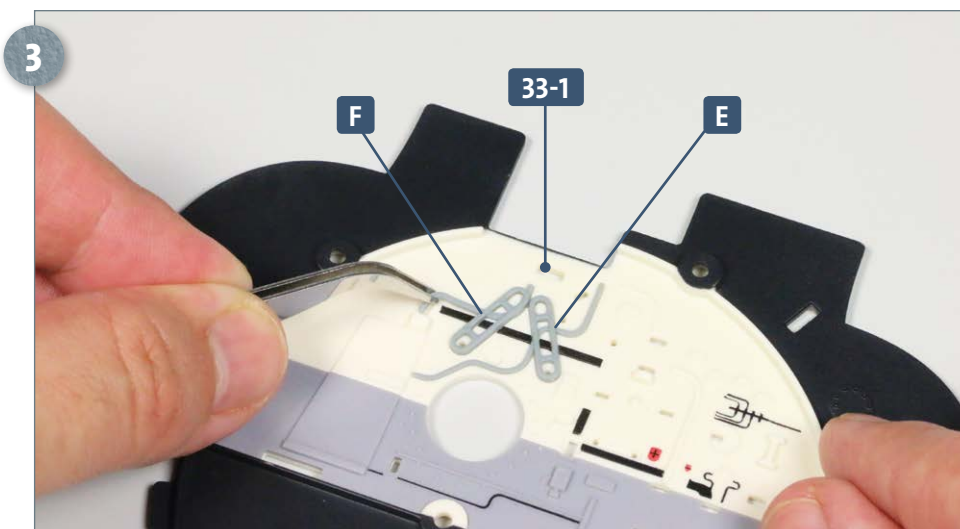
## STAGE 2 → Attachments for the forward central bulkhead



Place the forward central bulkhead 33-1 on your work surface. After test-fitting the mounting plate 33-8, apply some glue to the six pegs on the back and secure it to the bulkhead 33-1, as shown in the inset image below.

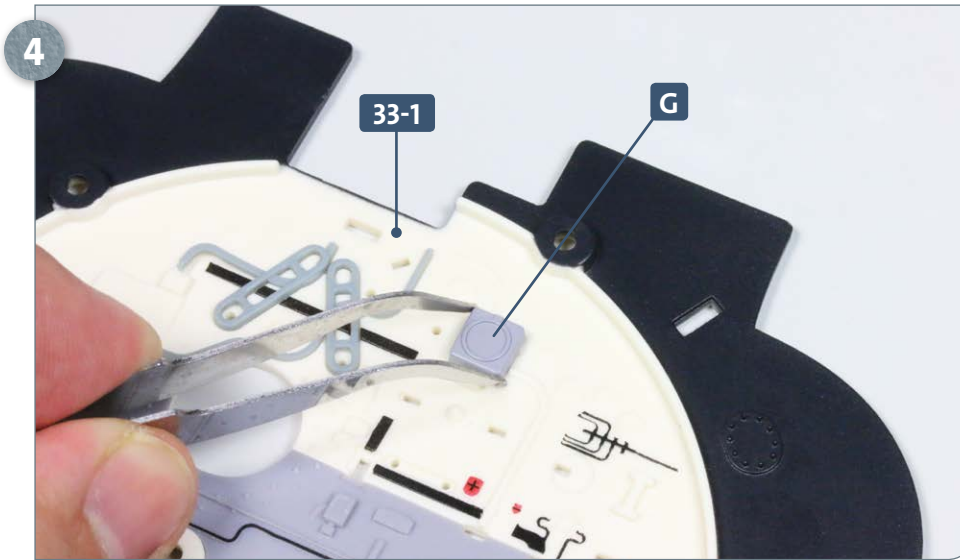


Next, take the frame 33-4 and when needed, detach the chains E and F, the loudhailer G, the gyrocompass mount H and the controls I.

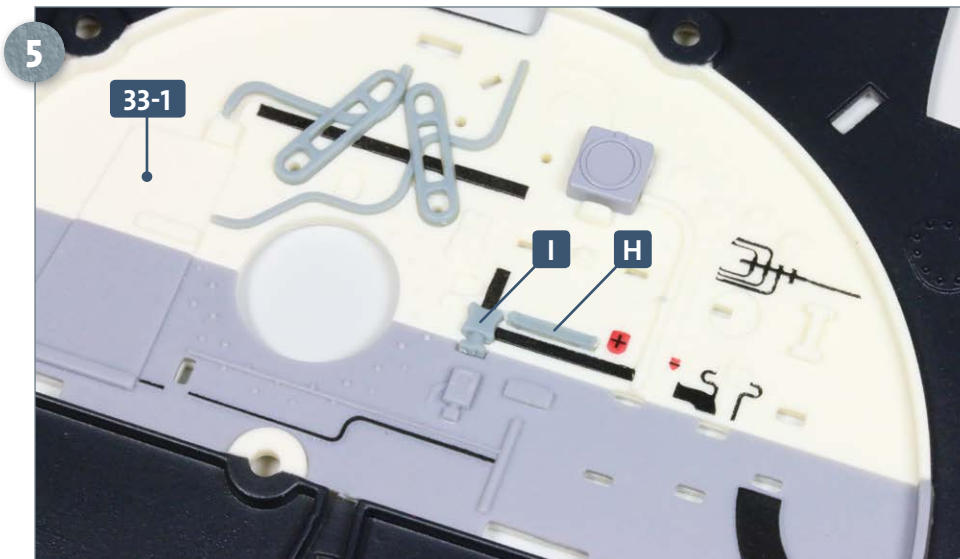


First, glue the chains E and F into the recesses in the bulkhead 33-1 as shown in the photo.

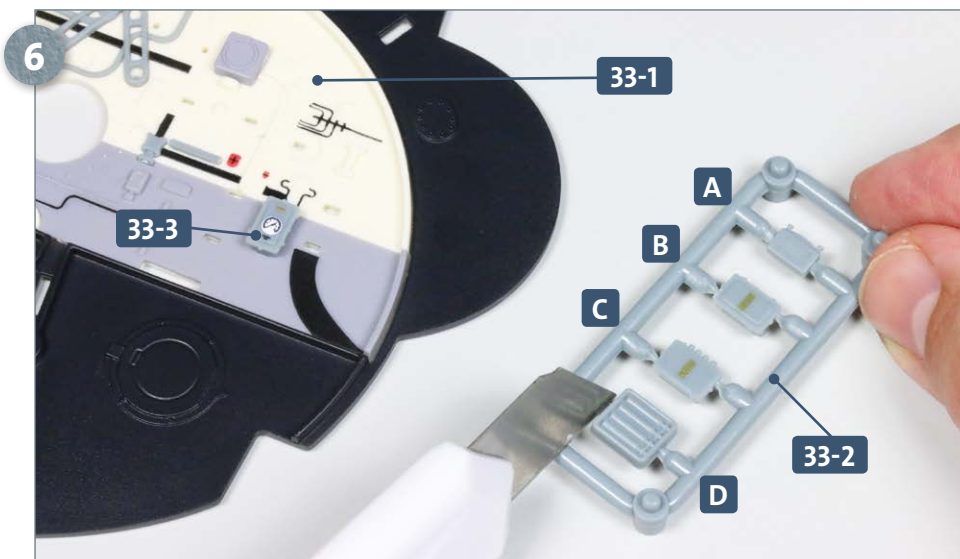
## Kit 33: Forward central bulkhead



Next, add some glue to the two pegs on the back of the loudhailer **G** and insert these into the slots in the bulkhead **33-1**, as shown.

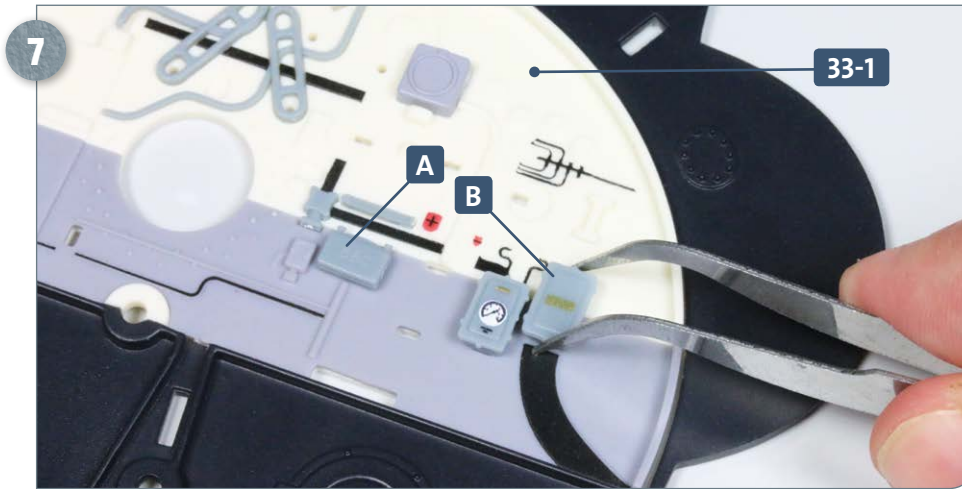


Glue the gyrocompass mount **H** and the control contacts **I** a little further down the bulkhead **33-1**, as shown.

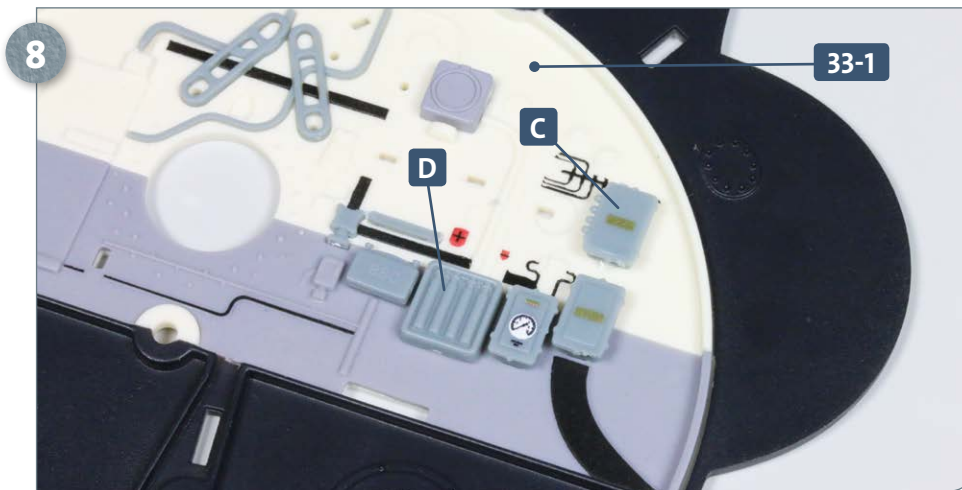


Glue the speed log **33-3** into the slots in the bulkhead assembly **33-1**. Then take the frame **33-2** and when needed remove the four parts: the rudder control **A**, the remote switch for the port (L) engine **B**, the remote switch for the starboard (R) engine **C** and the cartridges **D**.

## Kit 33: Forward central bulkhead

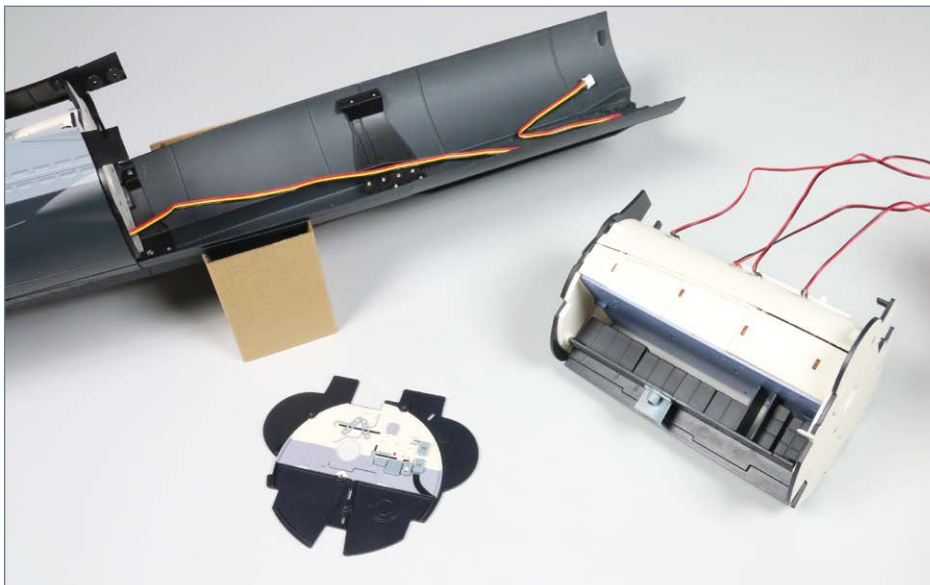


Glue the rudder control **A** and remote switch **B** to the bulkhead assembly **33-1**.



Finally, glue switch **C** and the cartridges **D** to the bulkhead assembly **33-1** as shown.

### COMPLETED WORK

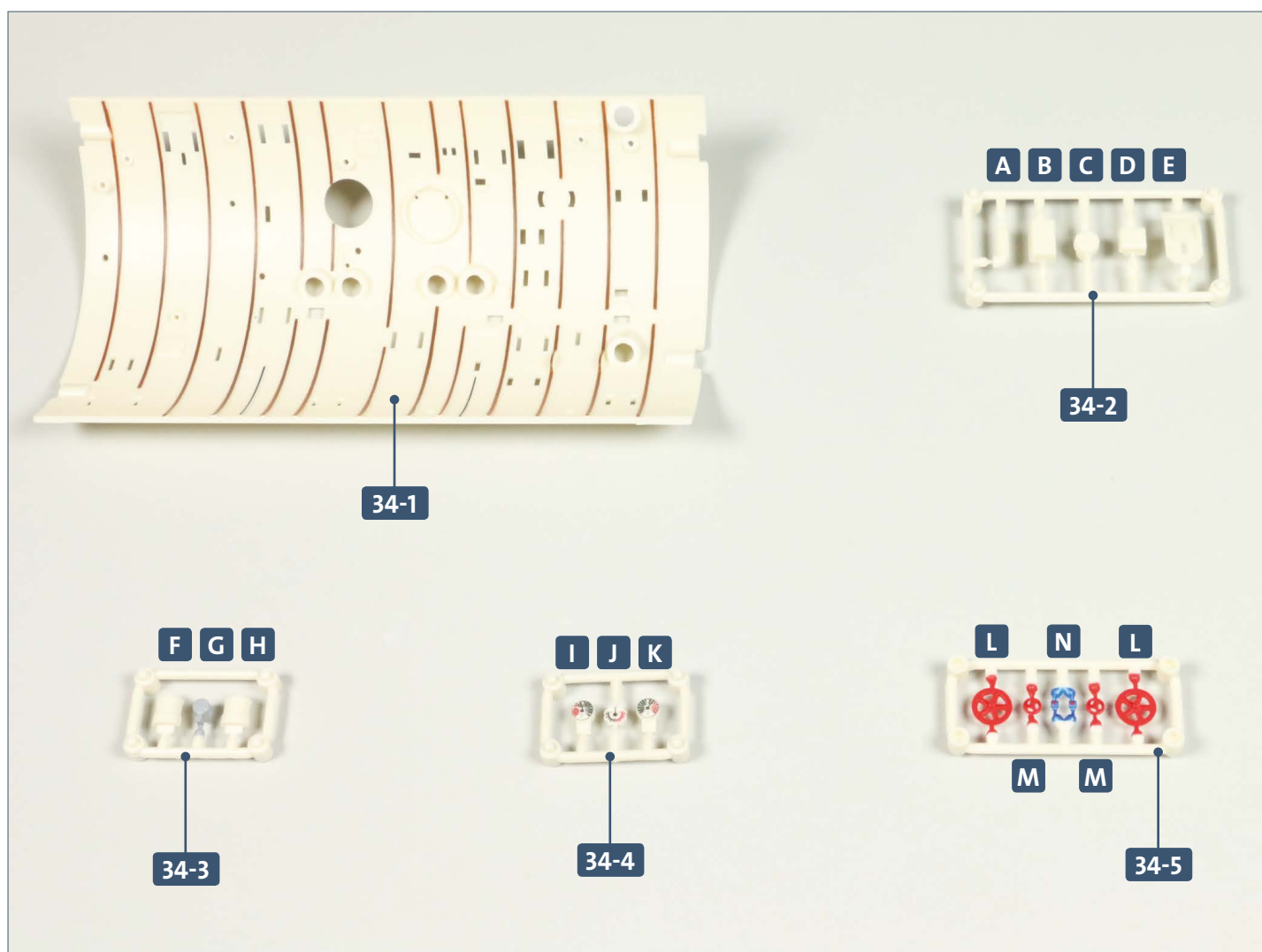


**A connector has been attached to the second hull compartment and a keel attachment mounted on the hull. Various attachments have been added to the central forward bulkhead.**



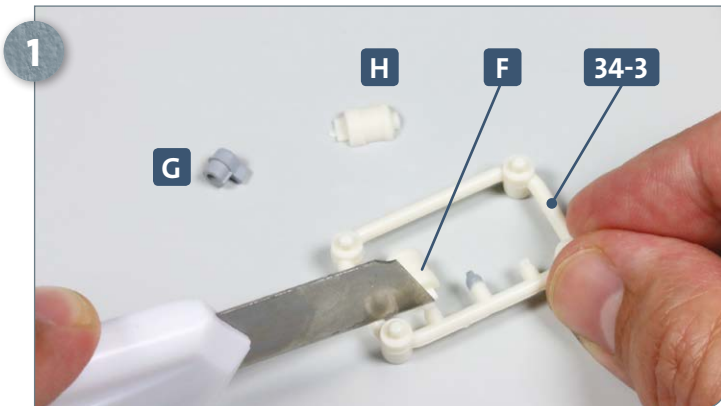
# Kit 34: Central compartment deckhead

In this kit, various parts are added to the forward bulkhead of the central compartment, including engine controls and rudder indicators. The deckhead is also equipped with some accessory details.

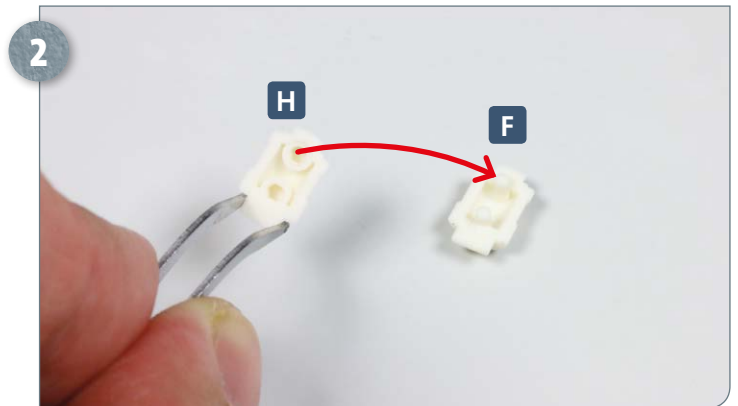


Parts reference list	
Part no.	Name
34-1	Central compartment deckhead
34-2	Frame (A, B, C, D, E)
34-3	Frame (F, G, H)
34-4	Frame (I, J, K)
34-5	Frame (L x 2, M x 2, N x 2)

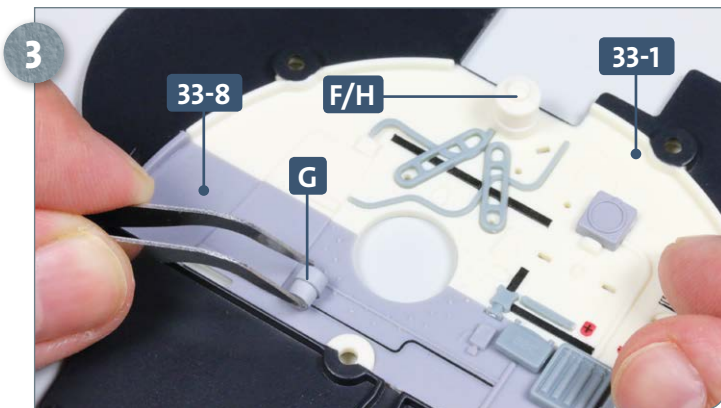
## STAGE 1 → The forward bulkhead



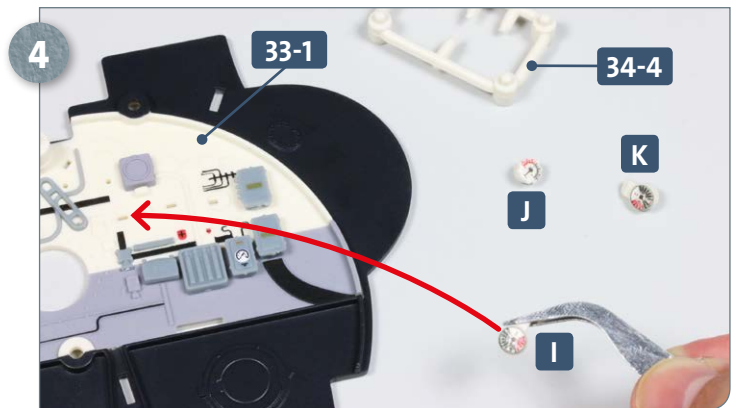
1 Place frame 34-3 on your work surface and detach the three parts: the two halves of the fuel cock, F and H, and sump G.



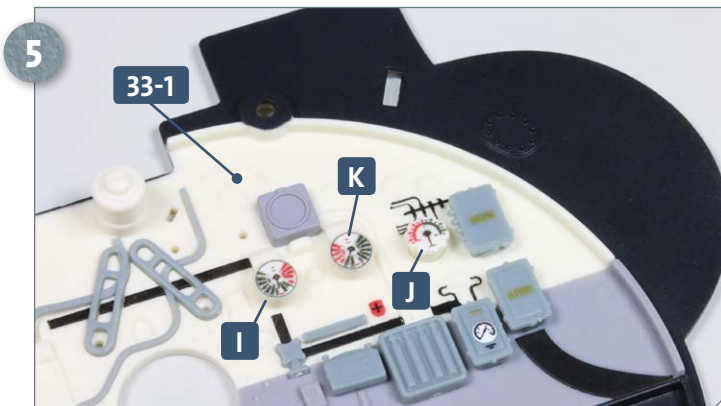
2 Apply some glue to the contact surfaces of F and H and join the two halves together as shown by the arrow.



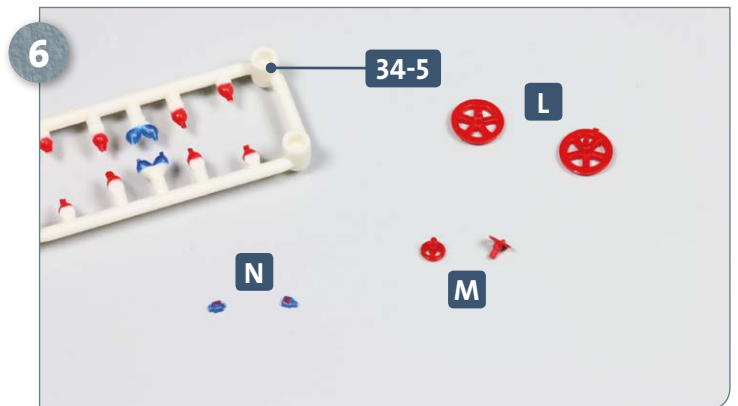
3 Place the bulkhead 33-1 on your work surface. Glue the fuel cock F/H to the top. The sump G is then glued to the mounting plate 33-8, as shown.



4 Next take frame 34-4 and when needed, detach the three parts: the two engine controls I and K and the rudder indicator J. Glue the engine control I into the left-hand slot in the bulkhead 33-1, as indicated by the arrow. Also study the next step to ensure the correct position and orientation.



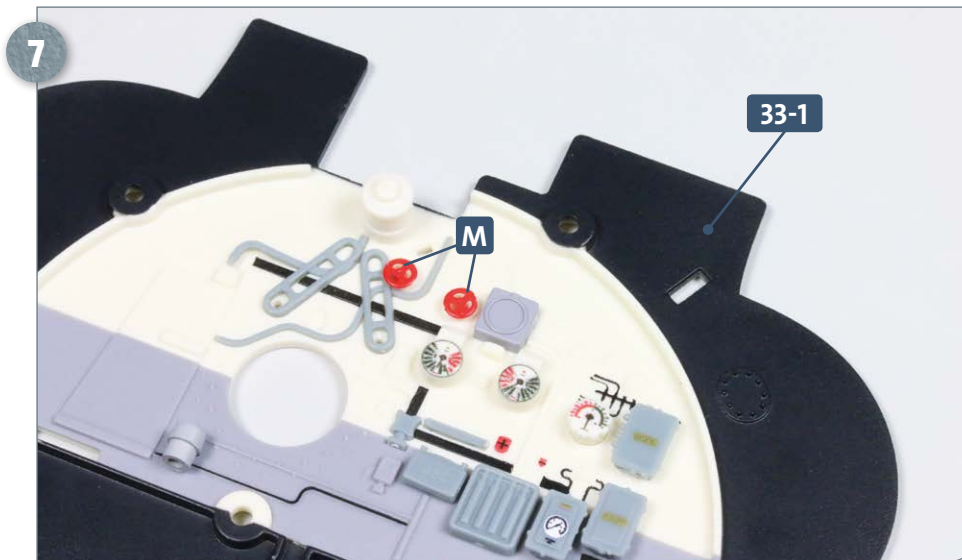
5 The remaining engine control K and rudder indicator J are glued to the bulkhead 33-1 as shown.



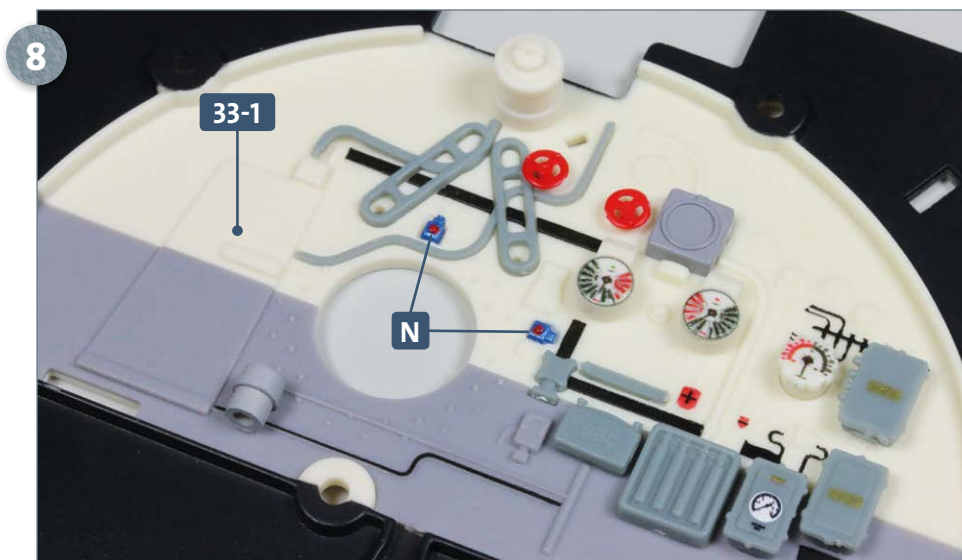
6 When needed, remove the six parts from frame 34-5: two pairs of handwheels L and M and two light switches N.



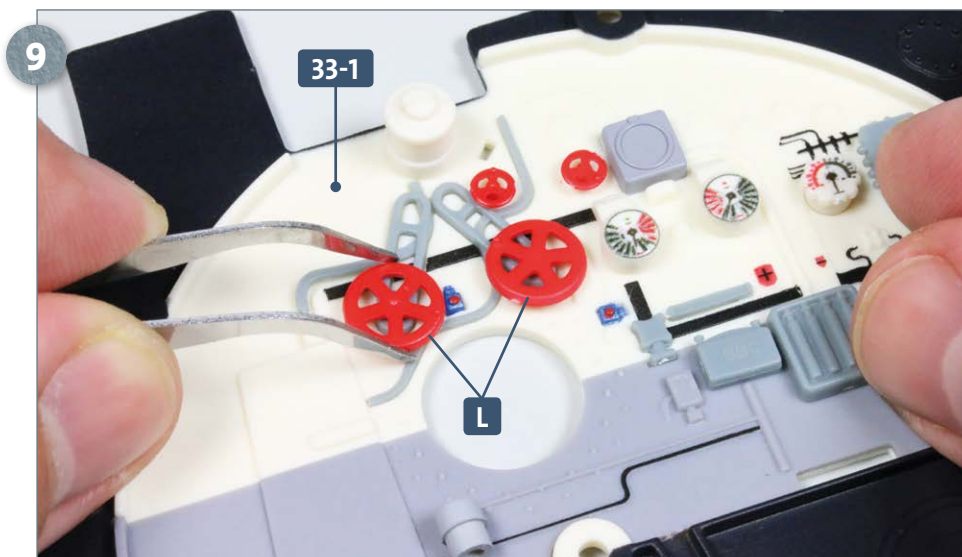
## Kit 34: Central compartment deckhead



Apply glue to the pegs on the back of the two smaller handwheels **M** and fit them into the holes at the top of the bulkhead **33-1** as shown in the photo.

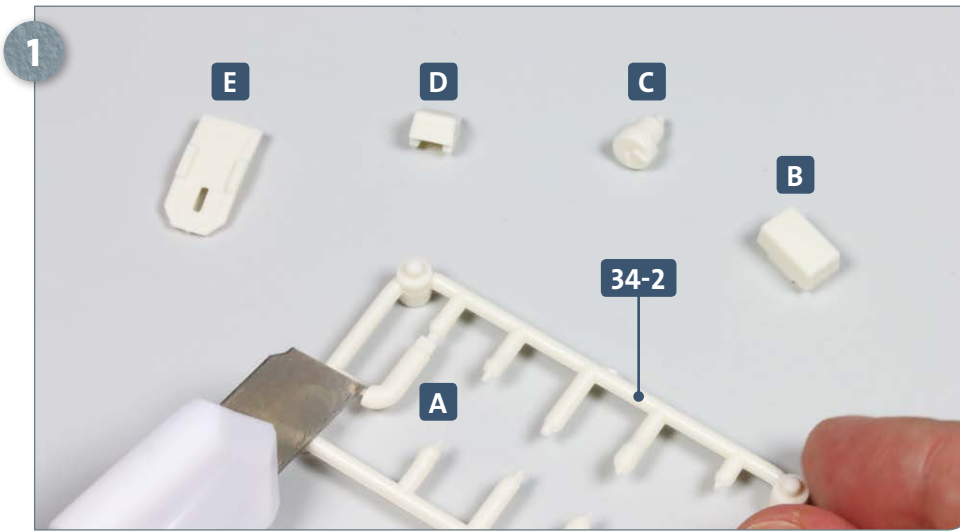


Glue the two light switches **N** into the corresponding recesses a little further down the bulkhead **33-1**.

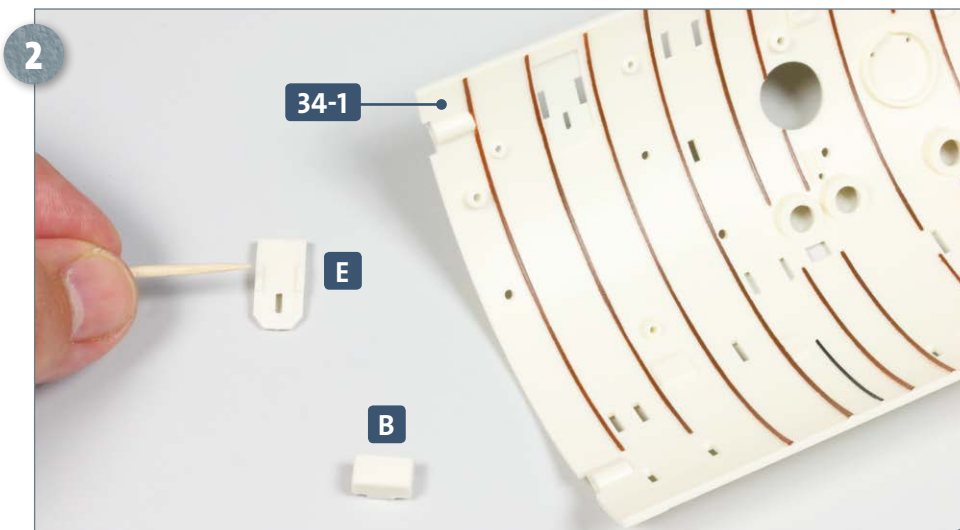


The two larger handwheels **L** are glued into the holes at the top-centre of the bulkhead **33-1**, within the two chains attached in the previous kit.

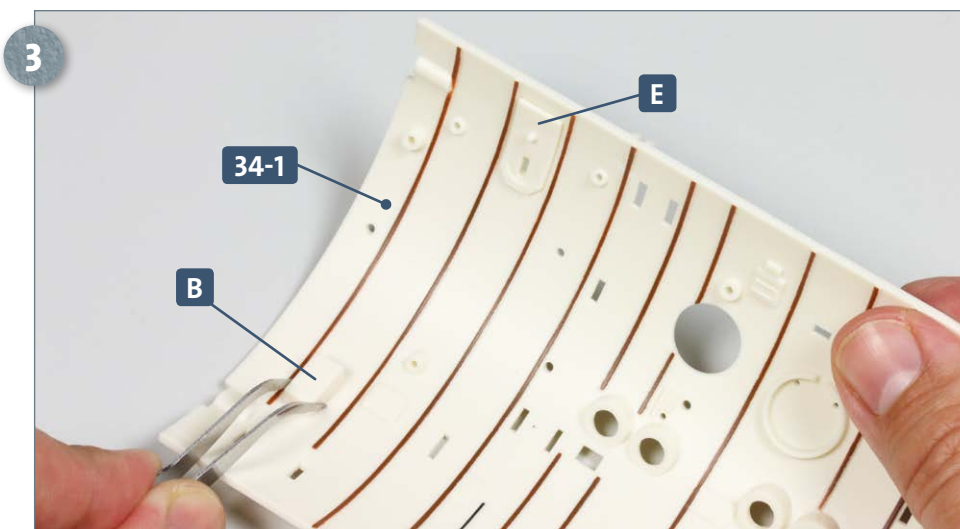
## STAGE 2 → Details for the deckhead



When needed, detach parts **A**, **B**, **C**, **D** and **E** from frame **34-2**.

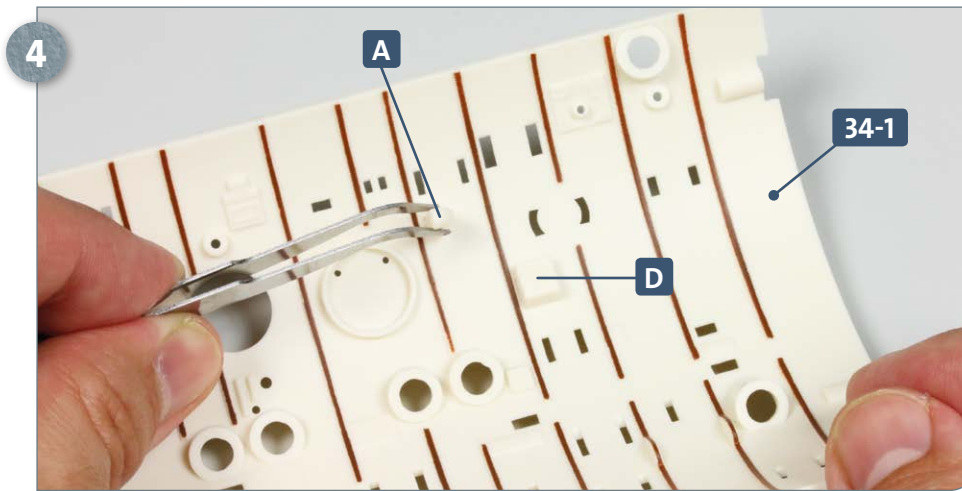


Place the deckhead **34-1** on your work surface, with parts **B** and **E** next to it. Apply some glue to the backs of the two pieces, as shown.

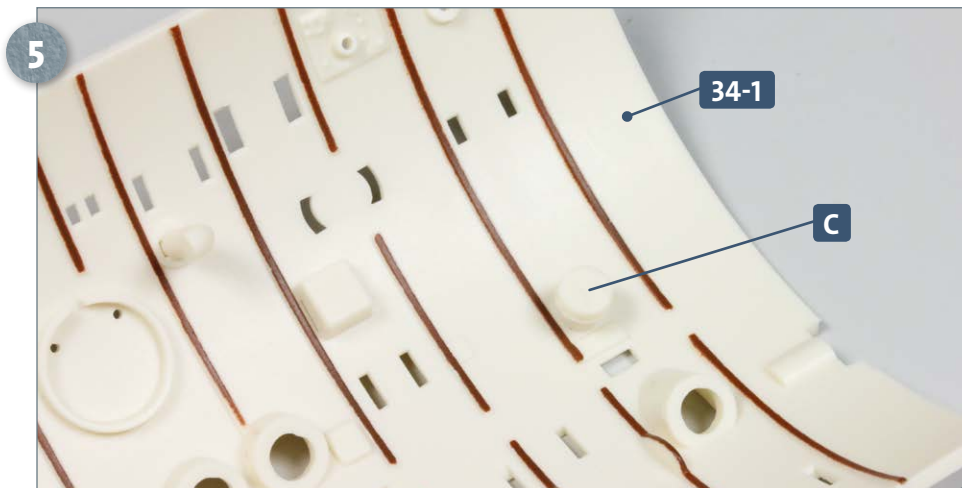


Glue parts **E** and **B** to the deckhead **34-1** as shown in the photo.

## Kit 34: Central compartment deckhead

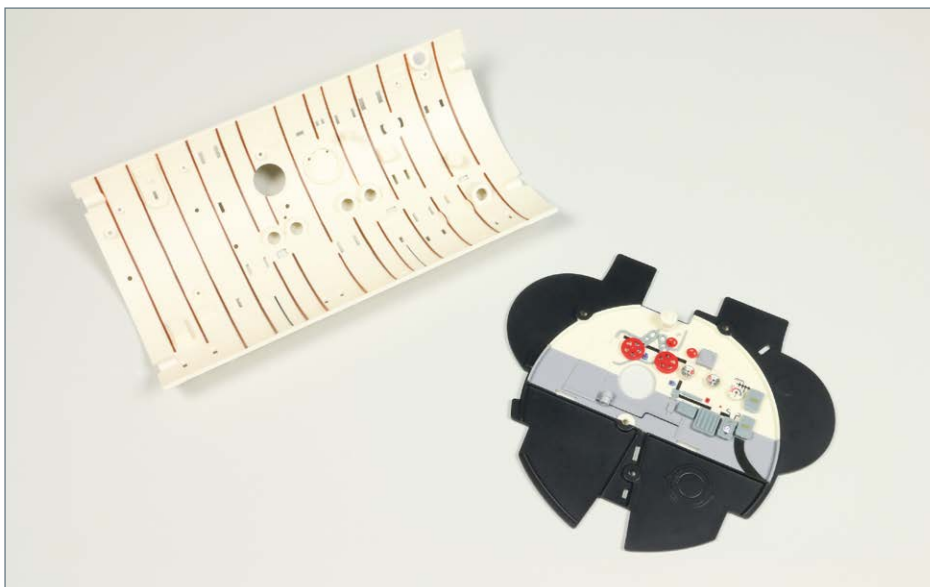


At the other (forward) end of the deckhead **34-1** glue parts **D** and **A** in the positions shown here in the photo.



Finally, glue part **C** in position as shown.

### COMPLETED WORK

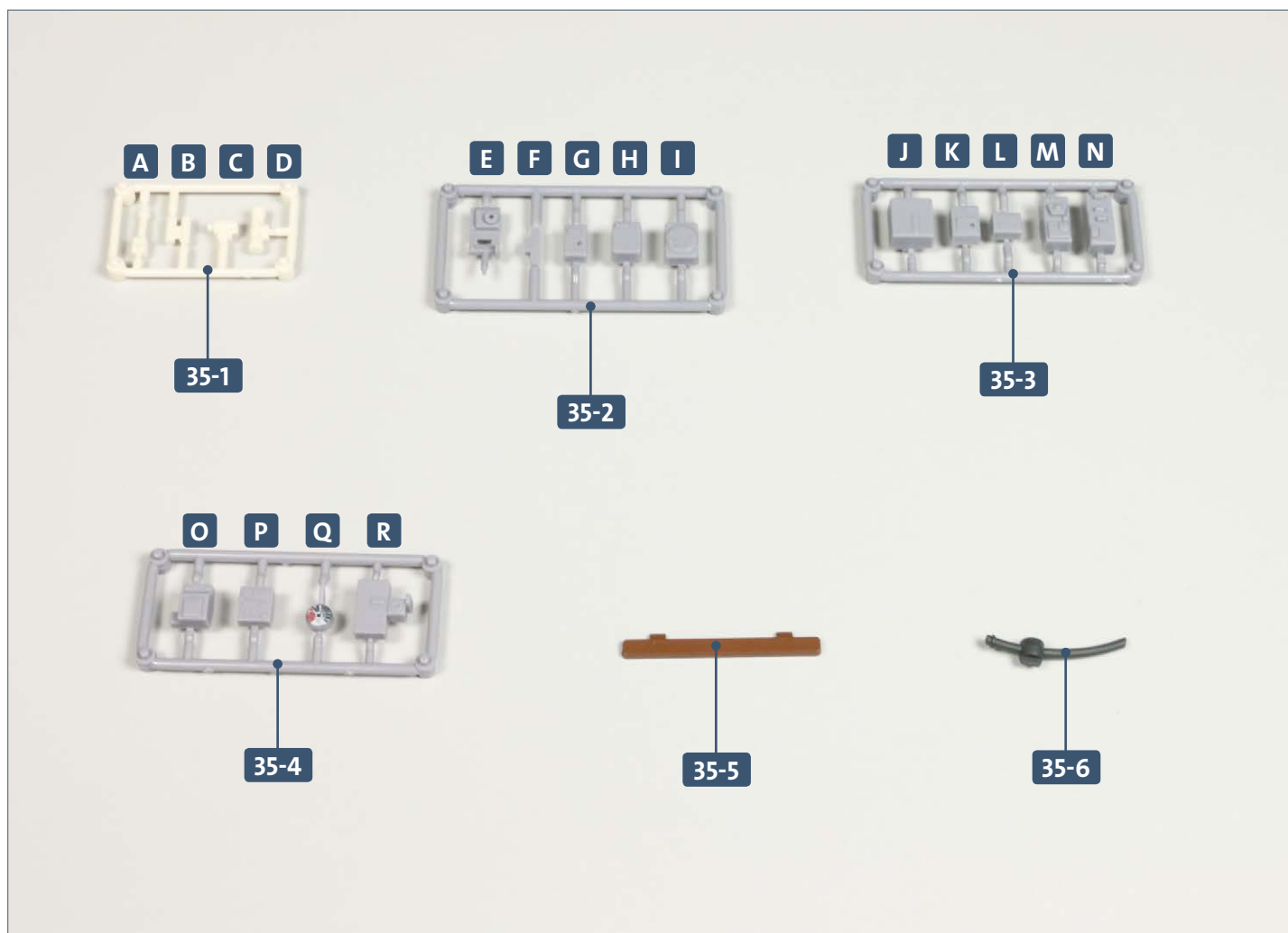


**Work on the central command compartment is progressing, with parts attached to the forward bulkhead as well as to the deckhead.**



# Kit 35: Central compartment deckhead: additional details

In this kit, additional detail is added to the deckhead of the central command compartment.

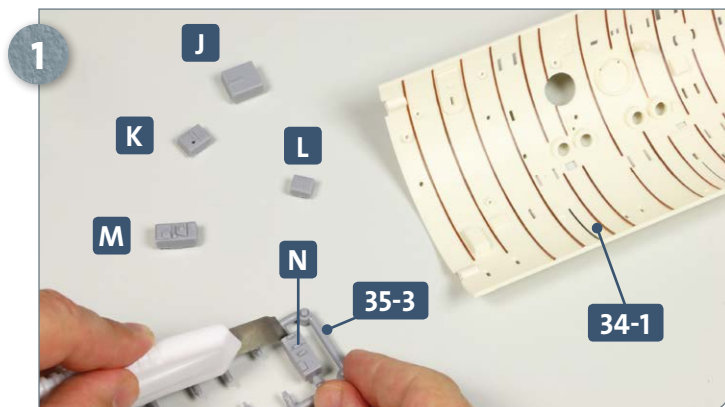


## Parts reference list

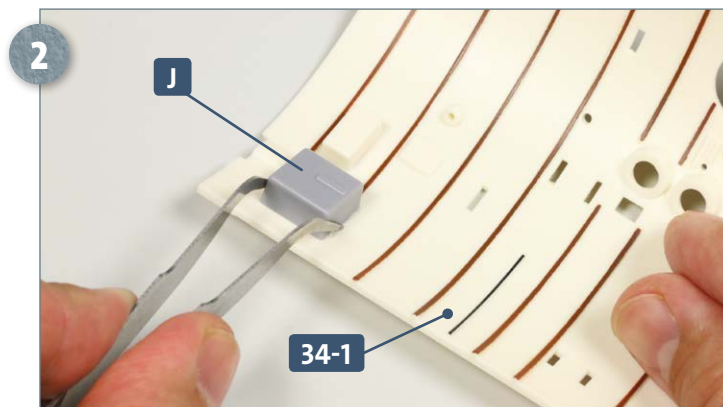
Part no.	Name
35-1	Frame (A, B, C, D)
35-2	Frame (E, F, G, H, I)
35-3	Frame (J, K, L, M, N)
35-4	Frame (O, P, Q, R)
35-5	Separation bar
35-6	Pipe

## Kit 35: Central compartment deckhead: additional details

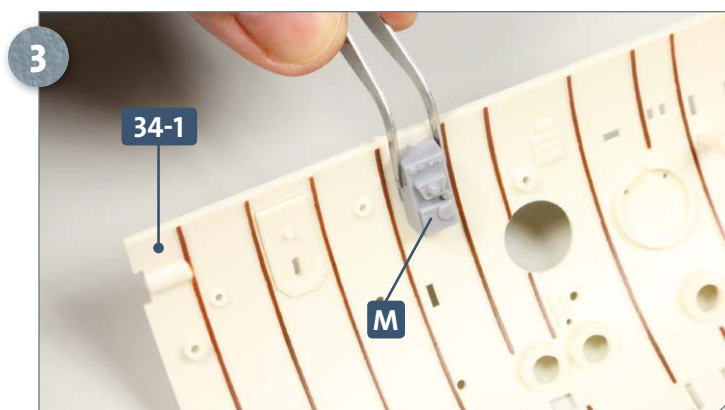
### STAGE 1 → Deckhead details



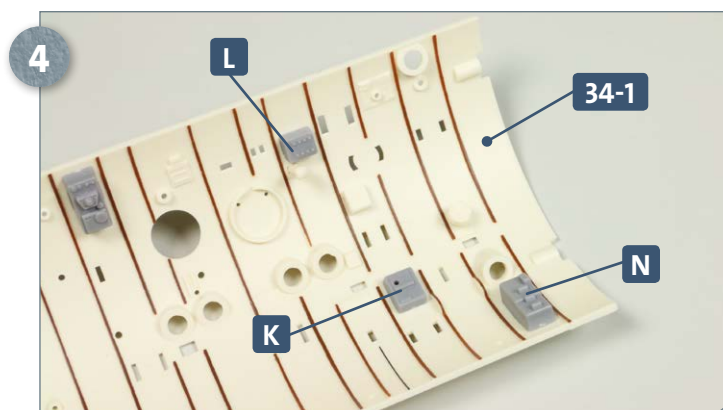
Place the deckhead 34-1 on your work surface as shown. Take frame 35-3 and when needed, detach the five parts J, K, L, M and N.



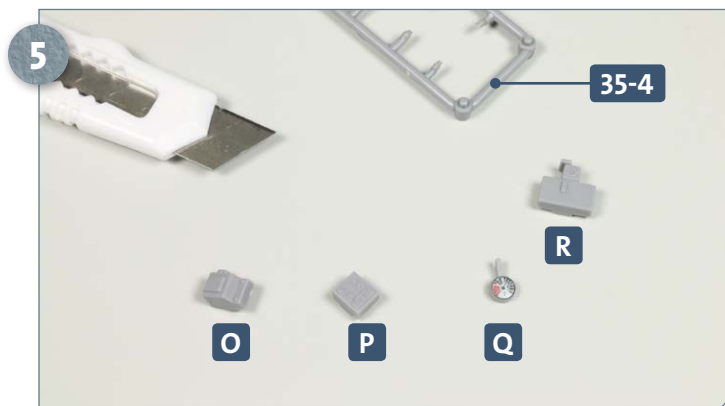
Apply some glue to the two tabs of J and insert into the slots at the aft end of the deckhead 34-1 as shown.



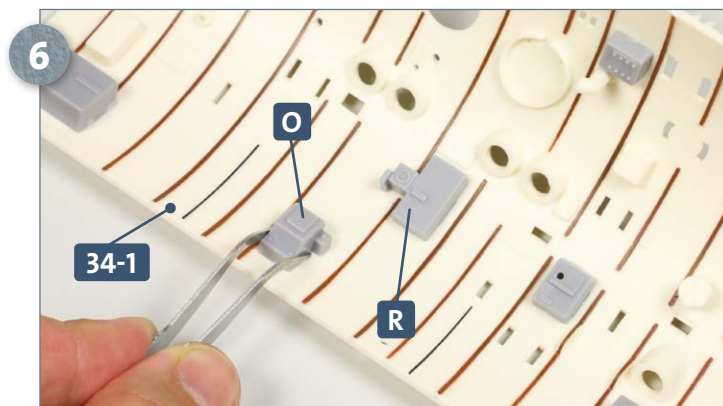
Next, glue part M to the deckhead, close to the edge, as shown in the photo above.



Glue parts K, L and N in the positions shown above.

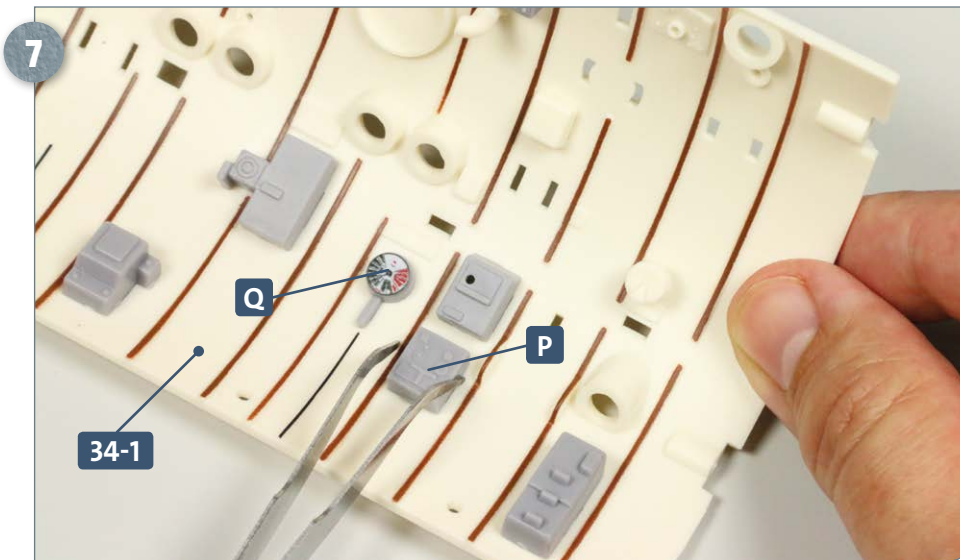


Next, take frame 35-4 and when needed, detach parts O, P, Q and R.

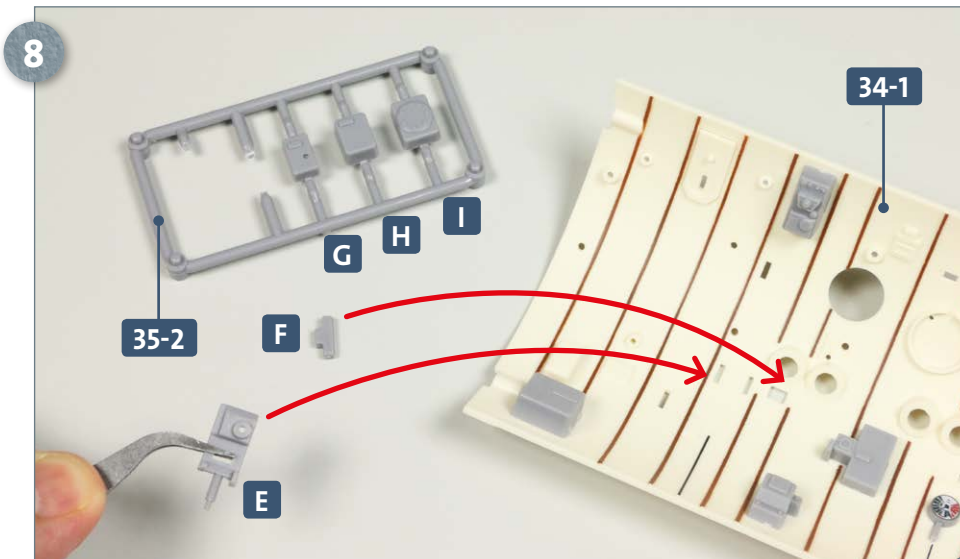


Glue parts O and R to the middle section of the deckhead 34-1, as shown in the photo.

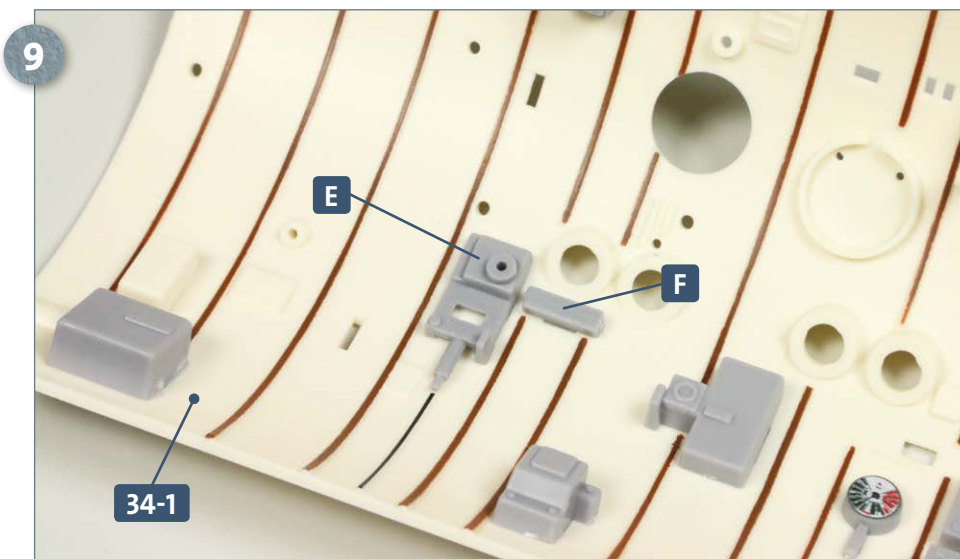
## Kit 35: Central compartment deckhead: additional details



Parts **P** and **Q** are attached to the forward section of the deckhead **34-1**: apply some glue to the tabs and insert into the corresponding slots.



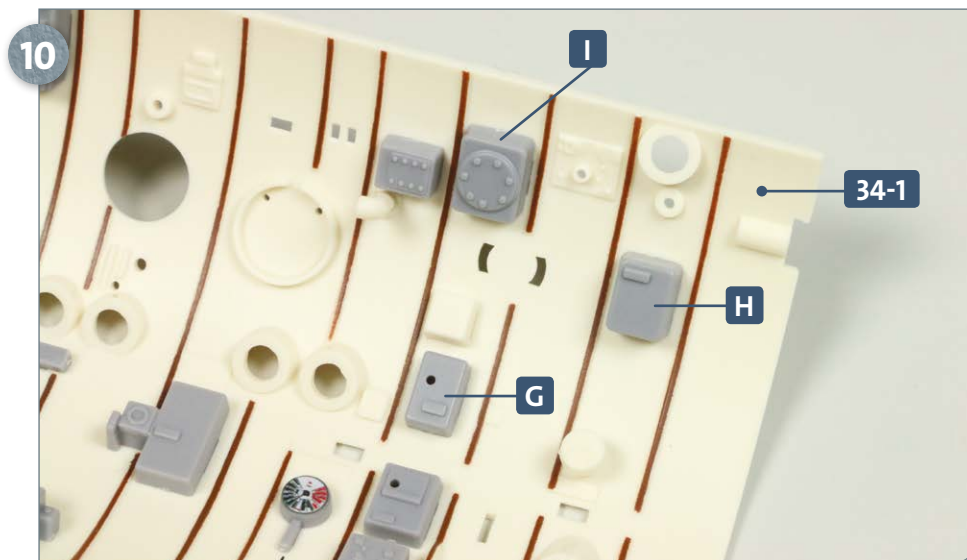
Next, take frame **35-2** and when needed, detach parts: **E**, **F**, **G**, **H** and **I**. First, take **E** and **F** and glue into the corresponding holes, indicated by the arrows.



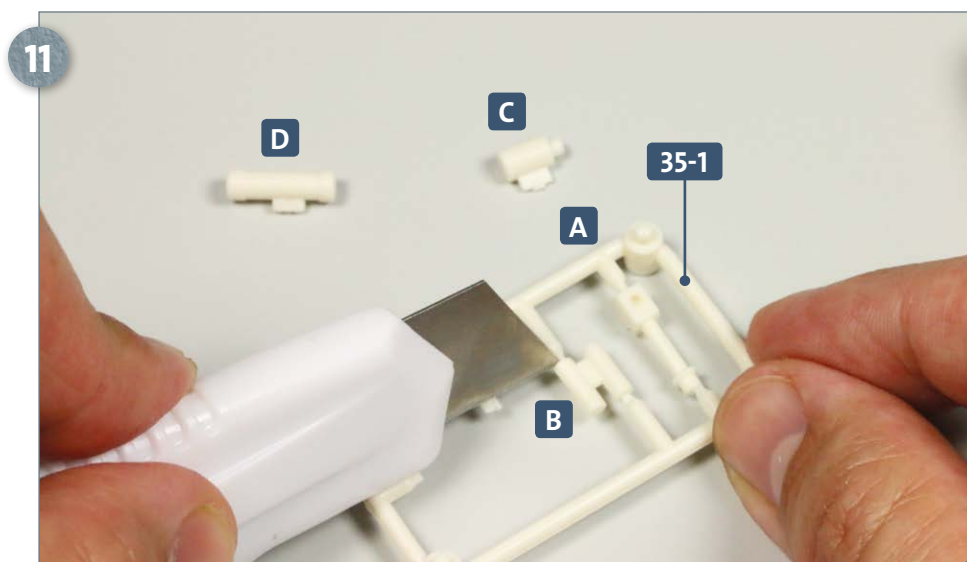
This photo shows parts **E** and **F** glued securely in position.



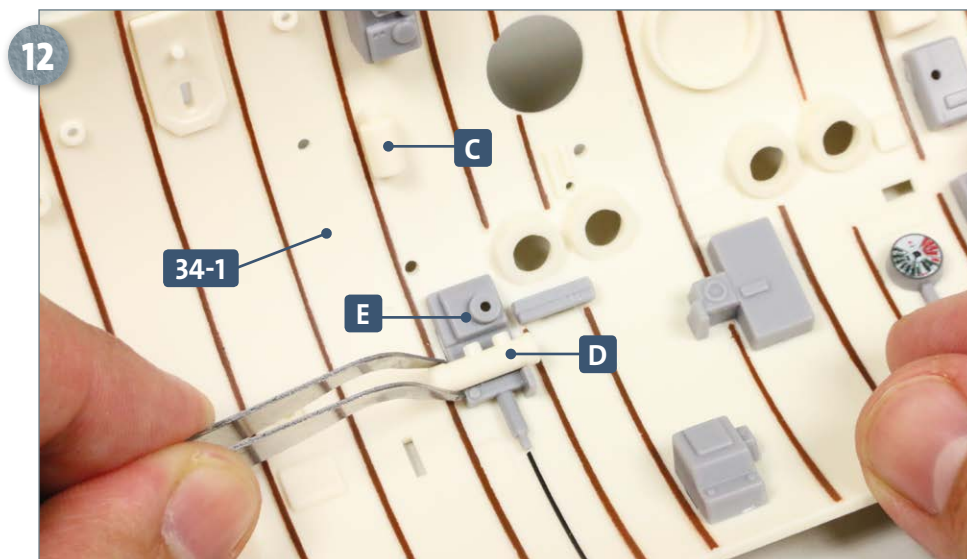
## Kit 35: Central compartment deckhead: additional details



Now take parts **G**, **H** and **I**. These are glued in the forward area of the deckhead **34-1** as shown in the photo.

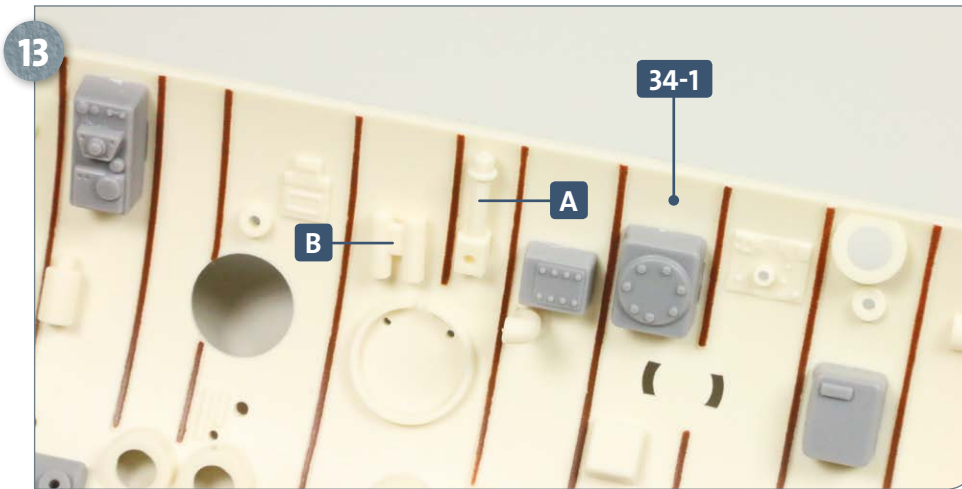


Next, take frame **35-1** and when needed, detach parts **A**, **B**, **C** and **D** as shown.

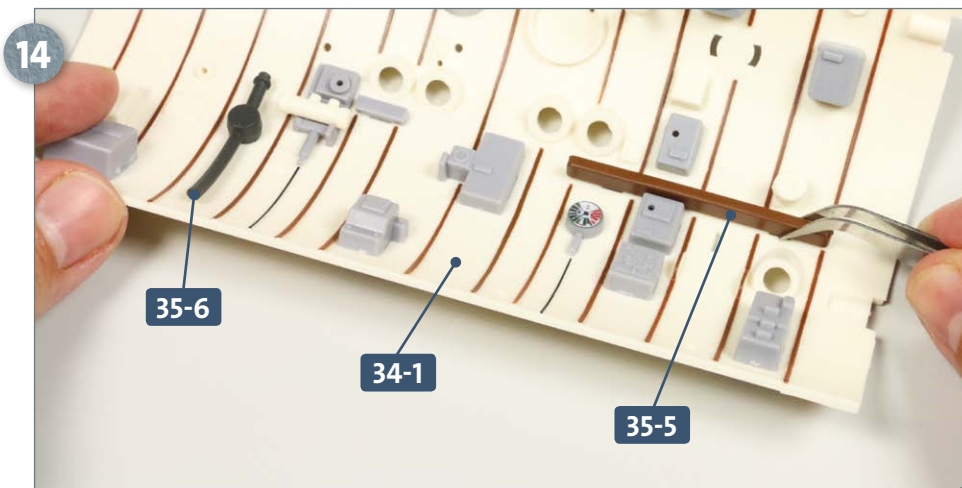


Glue part **C** in the aft section of the deckhead as shown. Part **D** is glued in the recess of part **E**, also shown in the photo.

## Kit 35: Central compartment deckhead: additional details

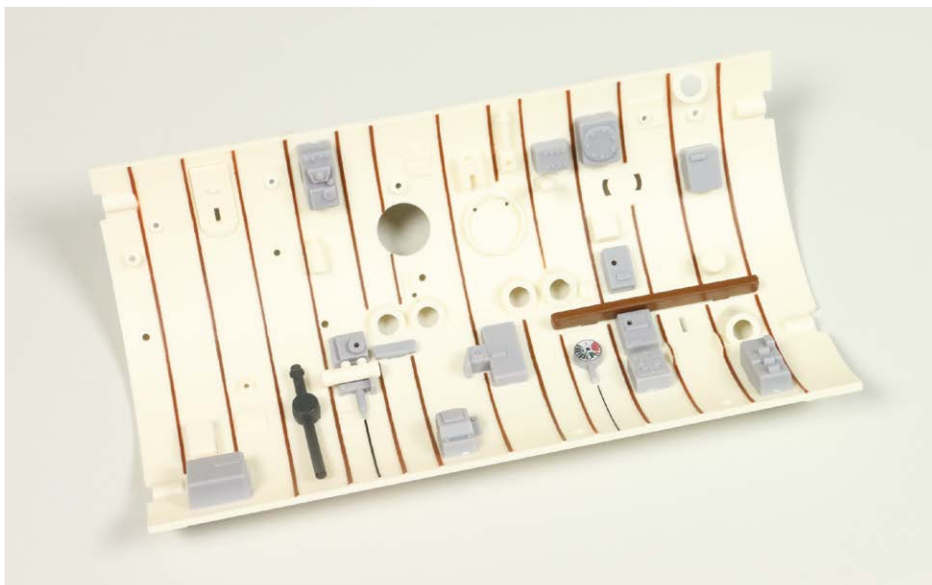


Glue parts **A** and **B** in their positions towards the centre, not far from the edge, as shown.



Finally, glue the separating strip **35-5** and pipe **35-6** to the deckhead **34-1** as pictured here in the photo.

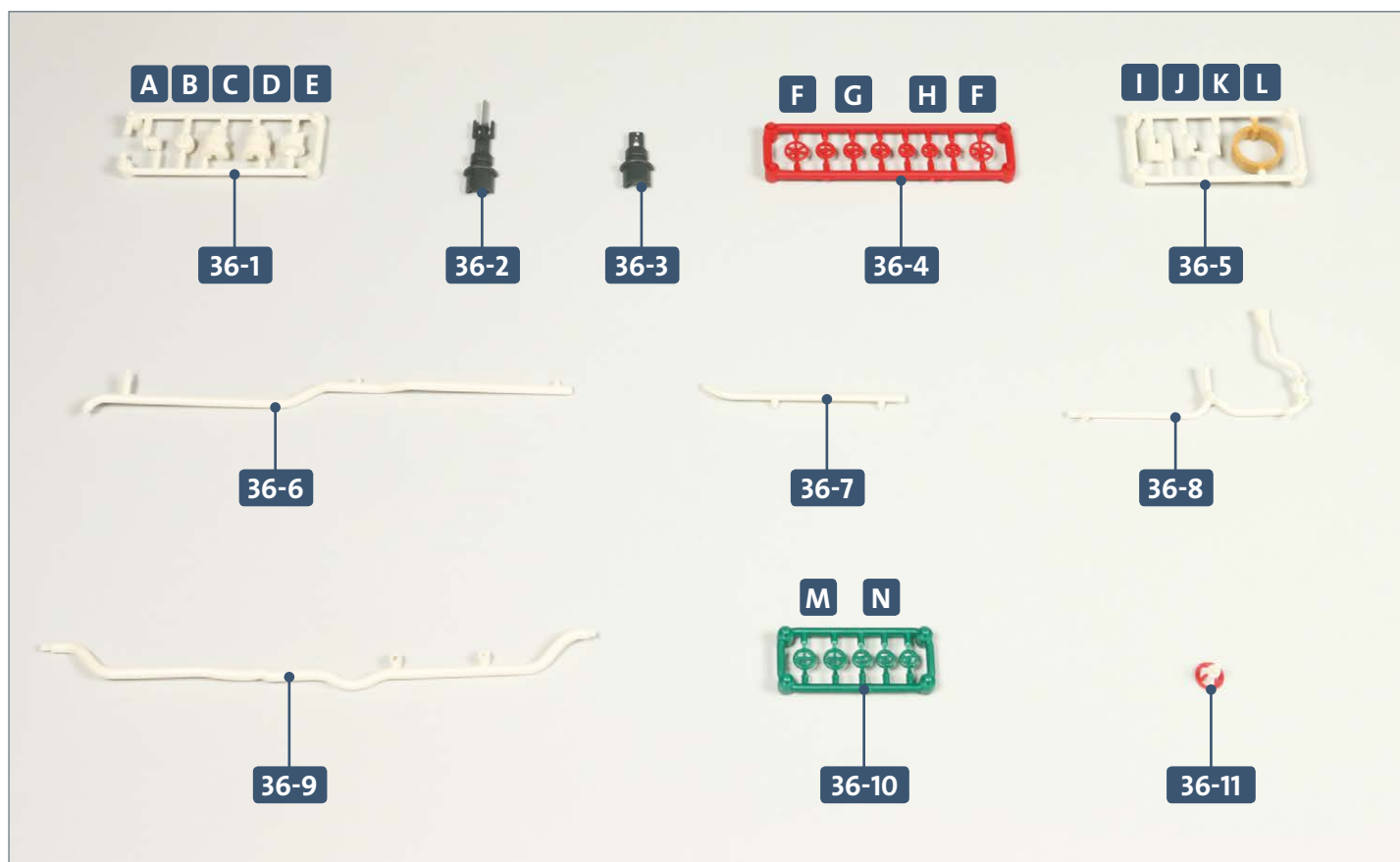
### COMPLETED WORK



The deckhead of the central command compartment has gained additional detail.

# Kit 36: Central periscope

In this kit, work on the deckhead of the central compartment continues: the installation of the central periscope, several handwheels, an exhaust valve handwheel, and a selection of piping and other attachments.

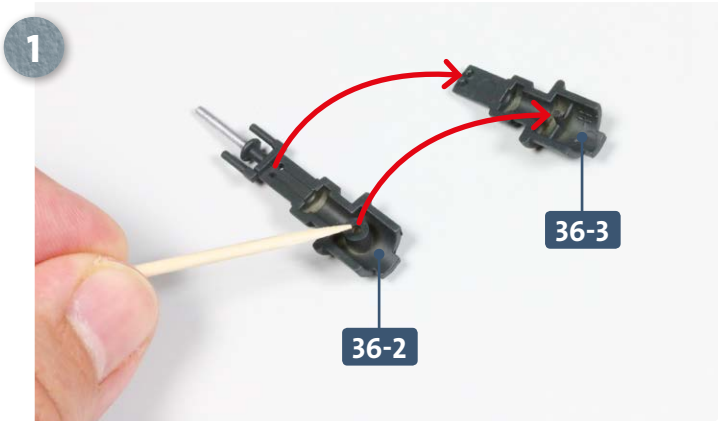


## Parts reference list

Part no.	Name
36-1	Frame (A, B, C, D, E)
36-2	Central periscope
36-3	Central periscope
36-4	Frame (2 x F, 3 x G, 3 x H)
36-5	Frame (I, J, K, L)
36-6	Piping
36-7	Piping
36-8	Piping
36-9	Piping
36-10	Handwheels (2 x M, 3 x N)
36-11	Exhaust valve handwheel



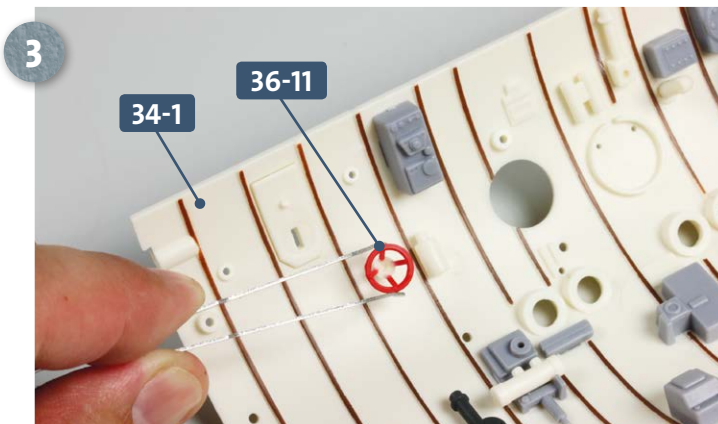
**STAGE 1** → Additional work on the deckhead



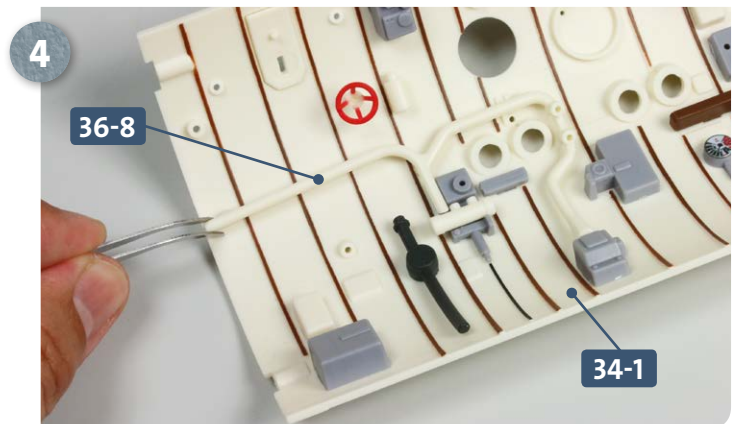
Take the two parts of the central periscope, **36-2** and **36-3**. Apply some glue to the contact surfaces of the two parts and fit together as indicated by the arrows.



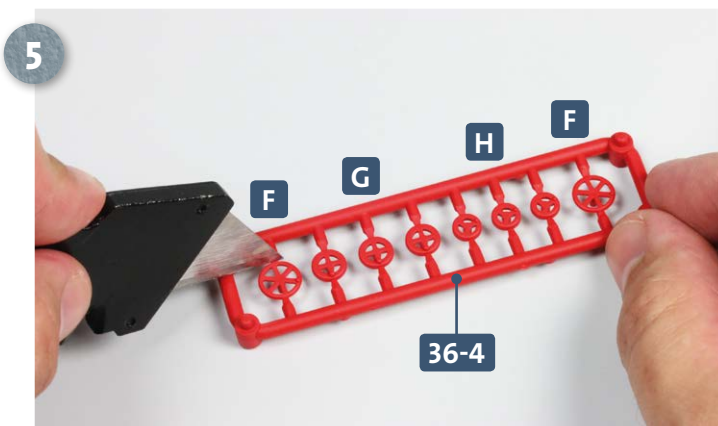
Apply some glue to the two pegs of the central periscope assembly **36-2/36-3** and insert into the corresponding slots in the forward section of the deckhead **34-1**, as shown. Study the photo carefully to ensure the correct orientation.



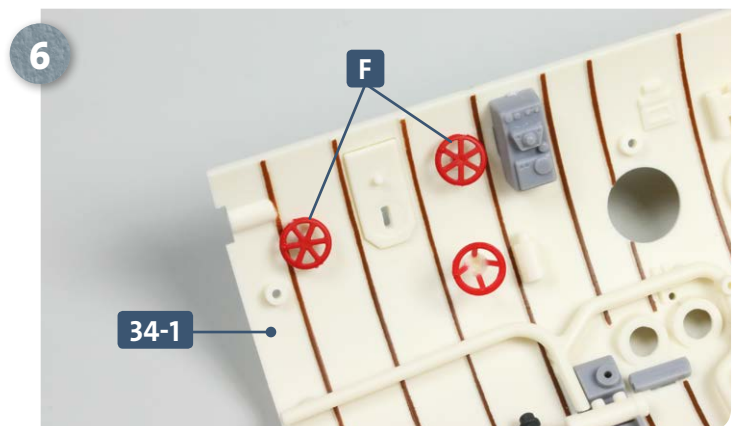
Take the exhaust valve handwheel **36-11** and apply some glue to the base. Glue this to the aft section of the deckhead **34-1** in the position shown.



After test-fitting, apply glue to the three pegs on the back of the piping **36-8** and insert into the corresponding three holes in the deckhead **34-1**, as pictured.

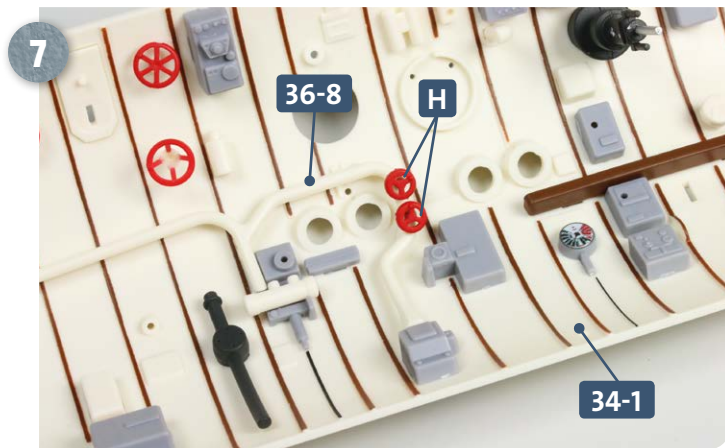


Take frame **36-4** and when needed, remove the two large handwheels **F**, the three medium handwheels **G** and the three small handwheels **H**.

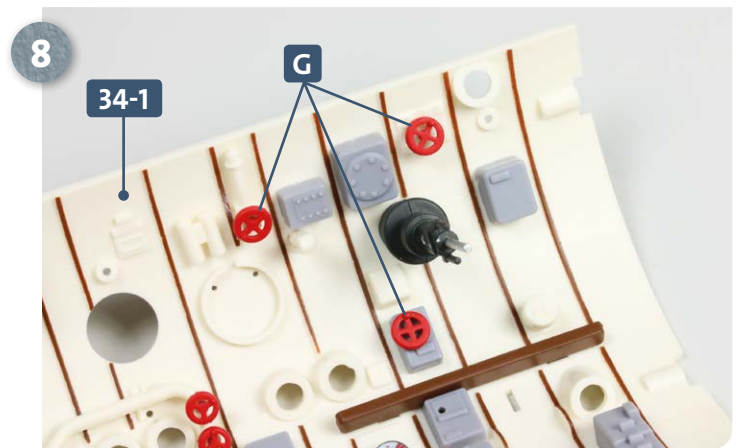


Glue the two larger handwheels **F** to the aft part of the deckhead **34-1** as shown.

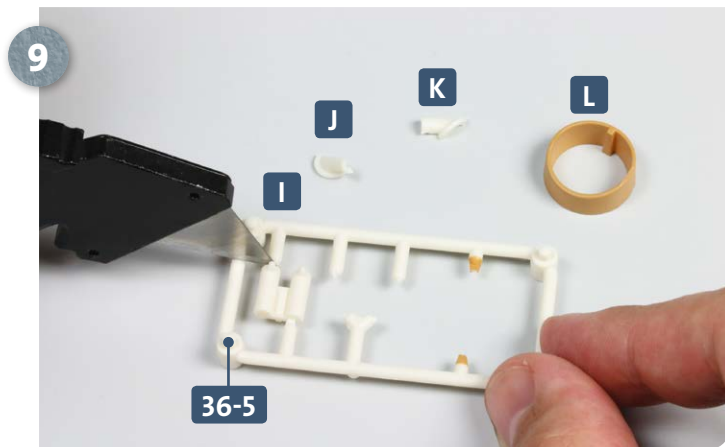
## Kit 36: Central periscope



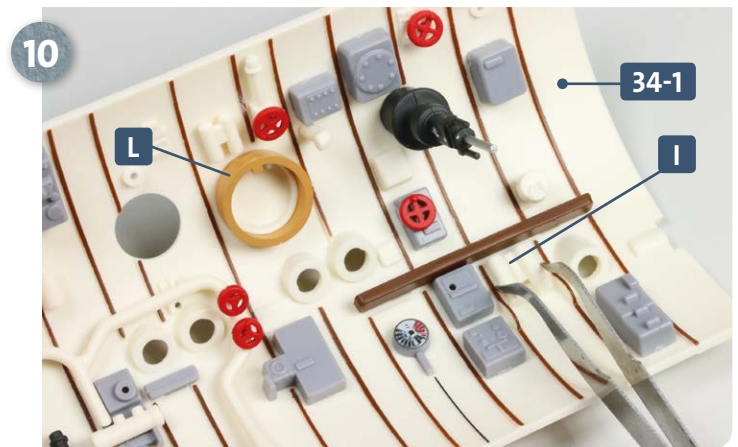
Two of the handwheels **H** are glued to the central area of the deckhead **34-1**, in the holes in pipe **36-8**. (The third handwheel **H** isn't required until step 17.)



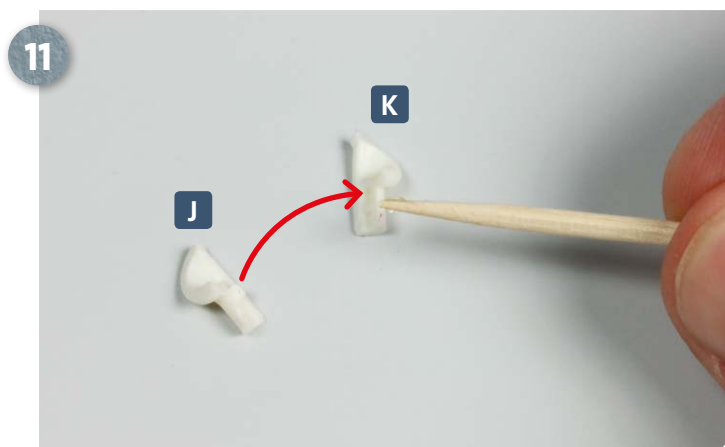
The three handwheels **G** are attached to the forward area of the deckhead **34-1**, either directly or to the previously installed attachments, as shown above.



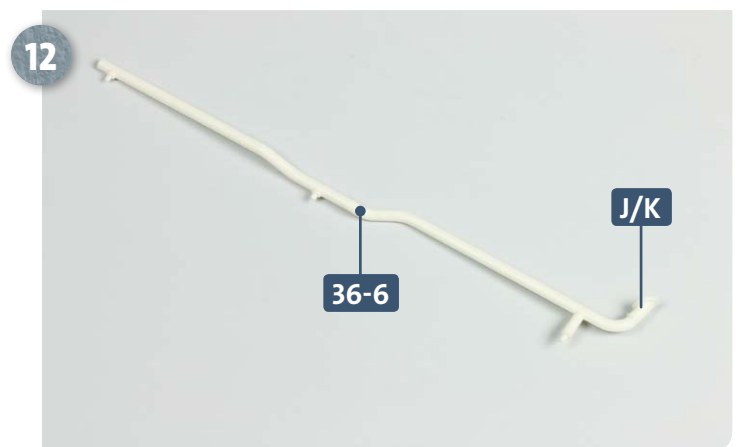
Take frame **36-5** and when needed, detach parts **I**, **J**, **K** and **L**. Make sure any remaining pieces of the attachment points to the frame are removed from the parts.



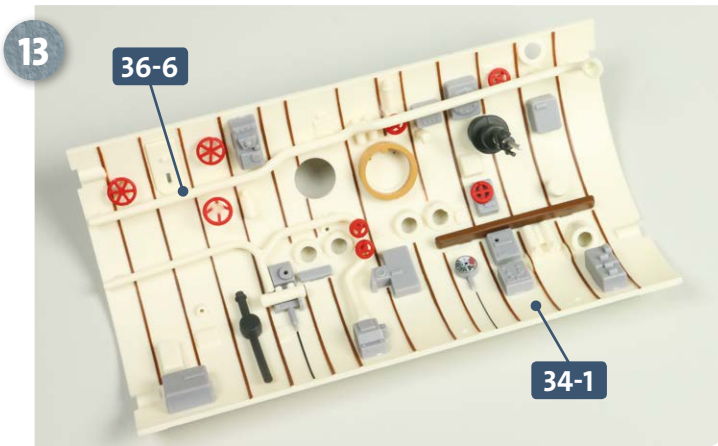
Apply some glue to the pegs on the back of part **L** and attach to the forward area of the deckhead **34-1**. Part **I** is added to the same end of the deckhead, as shown.



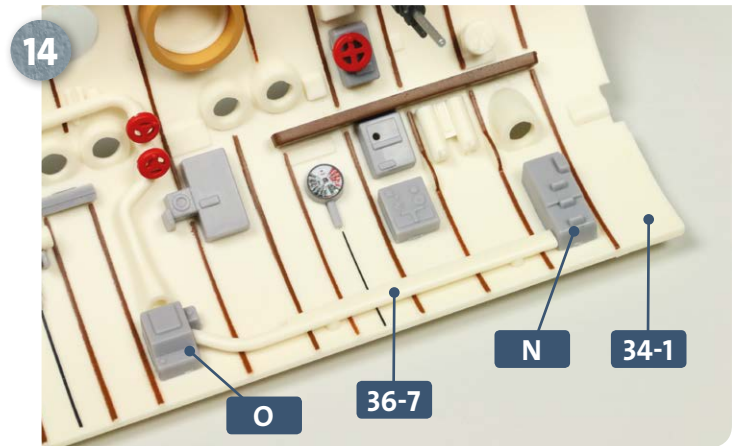
Apply glue very sparingly to the contact surfaces of parts **J** and **K** and join them together as indicated by the arrow.



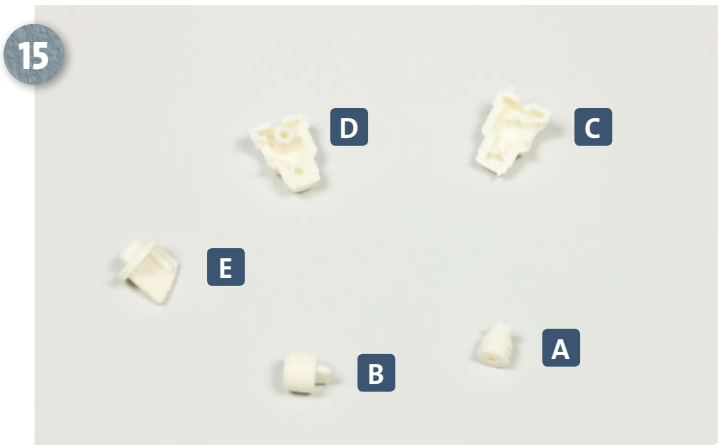
The assembly comprising **J/K** is glued to the end of pipe **36-6**.



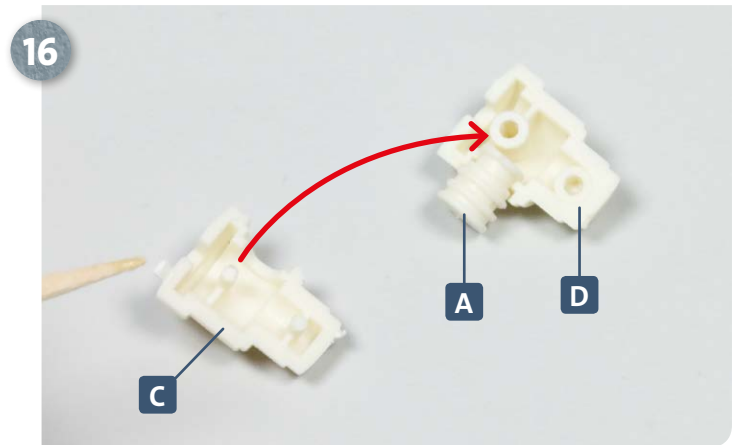
Apply glue to the three pegs on the back of piping **36-6** and insert into the three corresponding holes in the deckhead **34-1**, as shown.



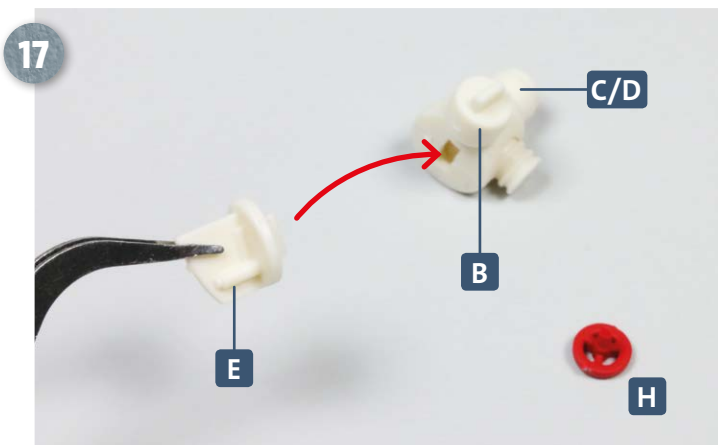
Apply some glue to the pegs on the back of piping **36-7** and glue into the corresponding holes in the deckhead **34-1** between parts **O** and **N**, (from kit 35).



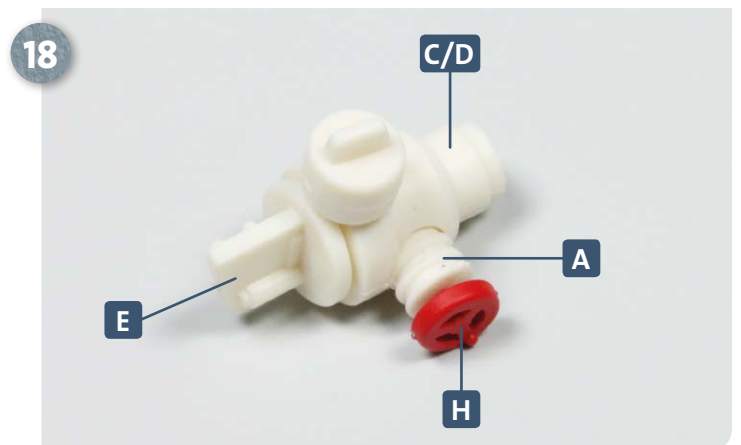
When needed, remove parts **A**, **B**, **C**, **D** and **E** from frame **36-1**. Remove any sign of their attachment points to the frame to leave a smooth surface.



Insert part **A** in the semicircular recess in part **D**. Then, apply some glue to the contact points of part **C** and fit it onto part **D** as indicated by the arrow.



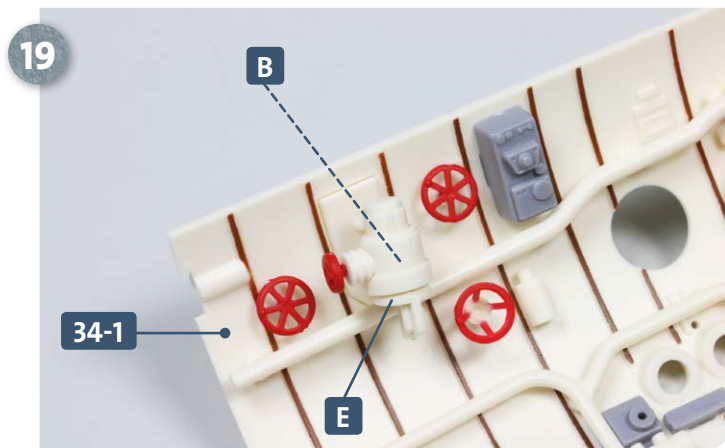
There is a recess in part **B**, which fits over a peg on assembly **C/D**. After test-fitting, glue in place. Then apply a little glue to part **E** and insert it into the slot in assembly **C/D**, as shown. Have ready the remaining handwheel **H**.



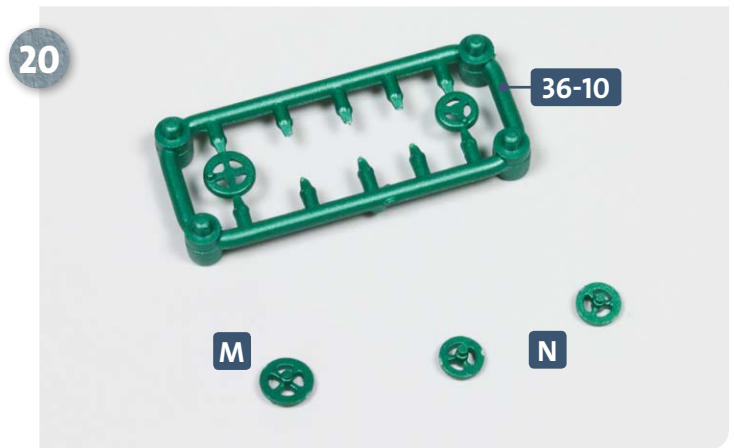
Once part **E** is attached to **C/D**, glue handwheel **H** into the hole in part **A**.



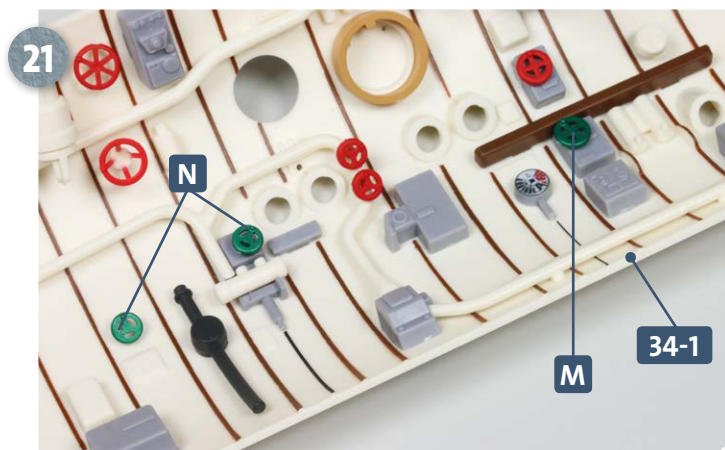
## Kit 36: Central periscope



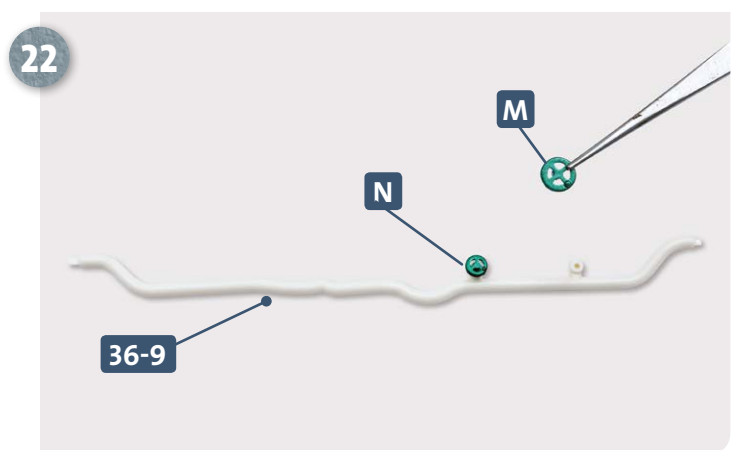
19 Add some glue to the peg of part **B** and attach the assembly to the aft section of the deckhead **34-1** (to the slot in part **E**, which you added in kit 34).



20 Separate handwheel **M** and two handwheels **N** from frame **36-10** as shown above.



21 Take handwheel **M** and two handwheels **N** and glue them to the pictured areas of the deckhead **34-1** – either directly or to parts already attached.



22 Take piping **36-9** and lay it on the work surface. Take the smaller handwheel **N** and glue it into the left socket on piping **36-9**, as shown. In a similar way, glue handwheel **M** into the other socket.

### COMPLETED WORK



Work has progressed on the deckhead. Piping **36-9** with the two handwheels attached should be kept safely to one side until it is needed in a later kit.